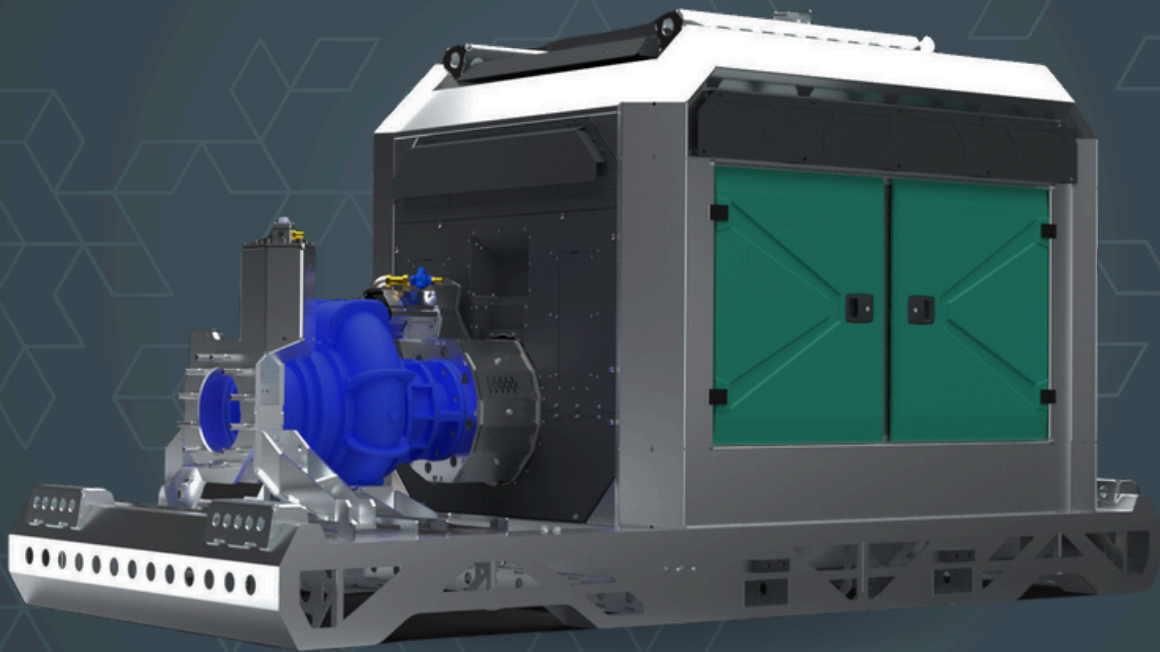


AEDONPUMP

RAPTOR 8D ULTRAHIGH



DIESEL

**DRIVEN SEWAGE
AND DEWATERING PUMP**

V2.25

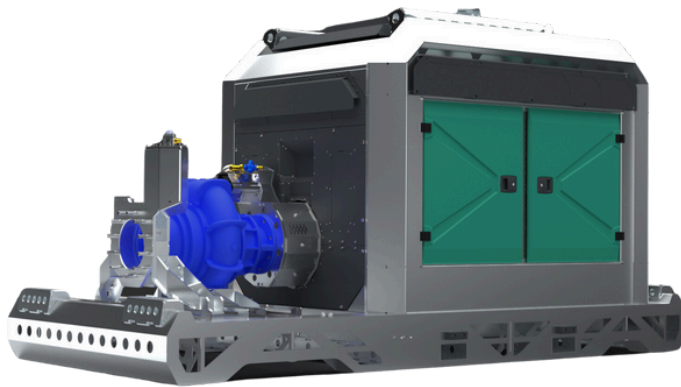
FEATURES AND COMPETITIVE EDGE

Type: **Raptor 8D ULTRAHIGH**
Connection size: **8x6"**

Frame LxWxH: **4500x2050x2400 mm / 177.2x80.7x94.5 in**
Dry weight: **5000 kg / 11000 lbs**
Fuel tank capacity: **400 L / 106 US gal**
Sound level: **76 dB at 10 m / 33 ft**

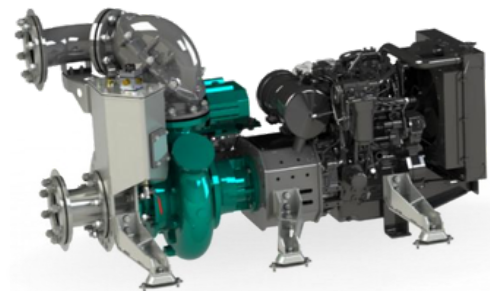
Designed for heavy duty applications.
Sewage bypass, drainage and dewatering:

- Extended maintenance intervals;
- High-grade parts of superior quality;
- Online telemetry and remote access capability;
- Unsurpassed efficiency values that set the industry standard.



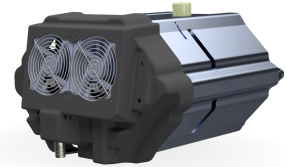
PUMP TECHNICAL SPECIFICATION

Pump Max. flow: **1026 m³/h / 4510 US gpm**
Max. head: **115 m / 377 ft / 164 PSI**
Impeller type: **Screw impeller**
Solids handling: **95 mm / 3.74 in**
Temperature: **max. 40°C / 104°F**
Casing: **GG25 (0.6025)**
Impeller: **GGG60 (0.7060)**
Suction Liner: **GG20 (0.6020)**
Wear Ring: **GG20 (0.6020)**
Shaft: **1.4021**
Shaft Sealing: **WC/SiC/NBR**
O-Rings: **NBR**
Suction liner adjustable by external regulation screws



Priming System

Pump type: **dry claw vacuum pump**
Air handling capacity: **60 m³/h / 35 CFM**
Max. vacuum: **9.0 m / 30 ft**
Floatbox: **Hot dip galvanized Steel**
Non-return valve: **Ductile iron GJS400**
Check valve ball: **Rubber NBR**

**ENGINE OPTIONS****Standard**

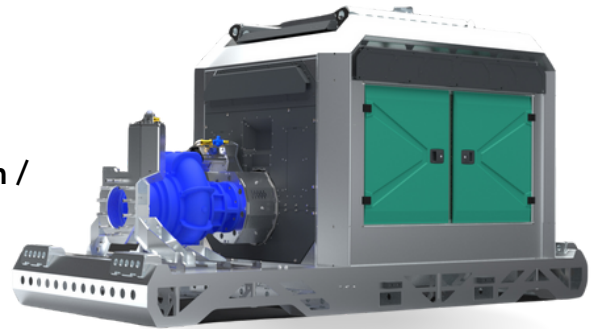
Model: **Volvo TAD582VE**
Emission standard: **Stage V / Tier 4f / Stage III**
Cylinders: **4**
Displacement litres: **5.13 L / 313 cu. in.**
Bore and stroke: **110 x 135 mm / 4.33 x 5.31 in**
Maximum power: **130 kW / 174 hp @1800 rpm**
Variable speed: **1600 - 1800 rpm**
Combustion system: **High-pressure common rail direct injection**
Exhaust after treatment: **DPF/SCR**



FRAME OPTIONS

Silent canopy

Canopy type: **Stackable**
Material: **Hot dip galvanized Steel**
Dimensions LxWxH: **4500x2050x2400 mm / 177.2x80.7x94.5 in**
Lifting point: **Single lifting point**
Forklift pockets: **Installed**

**Open canopy**

Canopy type: **Stackable**
Material: **Hot dip galvanized Steel**
Dimensions LxWxH: **4500x2050x2400 mm / 177.2x80.7x94.5 in**
Lifting point: **Single lifting point**
Forklift pockets: **Installed**

CONTROL PANEL OPTIONS

Standard

AEONPUMP Software
Automatic level control
Hydrostatic level sensor*
SMS alarm system*
Online telemetry*
Dual float switch
Light Assistant*

* Optional



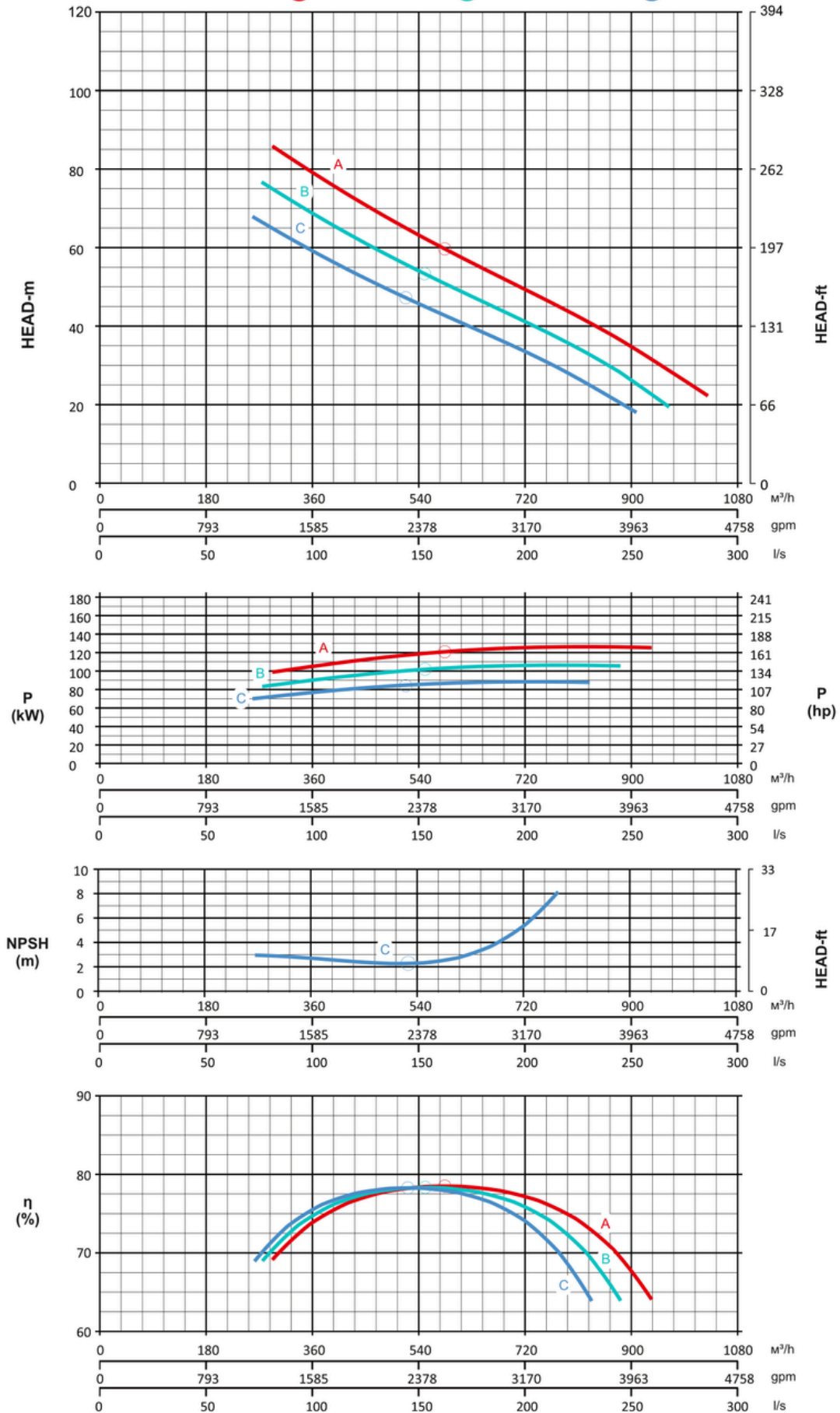


Curves at Speeds:

A 1800 rpm

B 1700 rpm

C 1600 rpm



Note: Pump power P include mechanical seal friction and bearing frame losses, from a run in bearing frame.