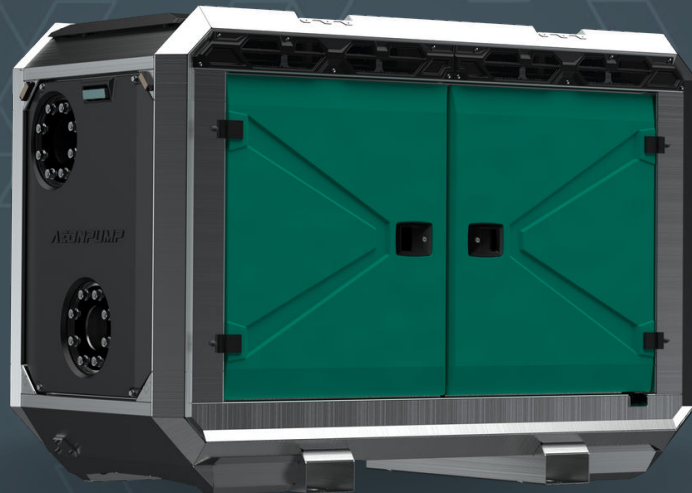


AEDONPUMP

RAPTOR 8D SUPERHEAVY



DIESEL

**DRIVEN SEWAGE
AND DEWATERING PUMP**

V3.25

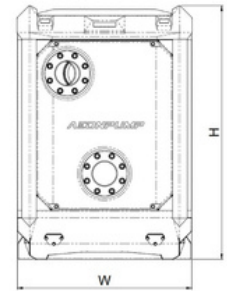
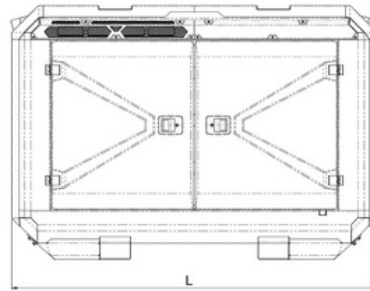
FEATURES AND COMPETITIVE EDGE

Type: **Raptor 8D SUPERHEAVY**
 Connection size: **8 in x 8 in**

Frame LxWxH: **2299x1100x1601 mm / 90.5x43.3x63 in**
 Dry weight: **1950 kg / 4300 lbs**
 Fuel tank capacity: **270 L / 70 US gal**
 Sound level: **76 dB at 10 m / 33 ft**

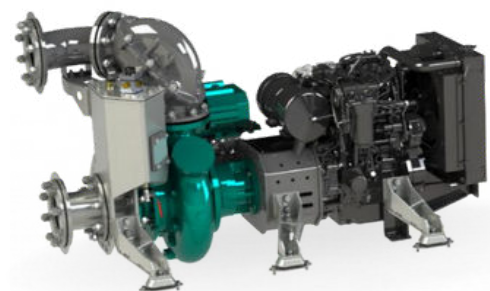
Designed for heavy duty applications.
Sewage bypass, drainage and dewatering:

- Extended maintenance intervals;
- High-grade parts of superior quality;
- Online telemetry and remote access capability;
- Unsurpassed efficiency values that set the industry standard.



PUMP TECHNICAL SPECIFICATION

Pump Max. flow: **600 m³/h / 2640 US gpm**
 Max. head: **46 m / 150 ft / 65 PSI**
 Impeller type: **Screw impeller**
 Solids handling: **115 mm / 4.5 in**
 Temperature: **max. 40°C / max 104°F**
 Casing: **GG25 (0.6025)**
 Impeller: **GKG60 (0.7060)**
 Suction Liner: **GG20 (0.6020)**
 Wear Ring: **GG20 (0.6020)**
 Shaft: **1.4021**
 Shaft Sealing: **WC/SiC/NBR**
 O-Rings: **NBR**
 Suction liner adjustable by external regulation screws



Dual Vacuum pump System

Priming System Pump type: **dry claw vacuum pump**
Air handling capacity: **120 m³/h / 70 CFM**
Max. vacuum: **9.0 m / 30 ft**
Floatbox: **Hot dip galvanized Steel**
Non-return valve: **Ductile iron GJS400**
Check valve ball: **Rubber NBR**
Additional Vacuum pump: **120 m³/h / 70 CFM**
Total Air Capacity: **240 m³/h / 140 CFM**



ENGINE OPTIONS

Standard Model: **Hatz 4H50TIC**
Emission standard: **Stage V/ Tier 4f**
Cylinders: **4**
Displacement litres: **1.952 L / 119.12 cu.in.**
Bore and stroke: **84 x 88 mm / 3.31 x 3.46 in**
Maximum power: **28 kW / 38 hp @1700 rpm**
Variable speed: **1300 - 1700 rpm**
Combustion system: **High-pressure common rail direct injection**
Exhaust after treatment: **cEGR, DOC, DPF**



FRAME OPTIONS

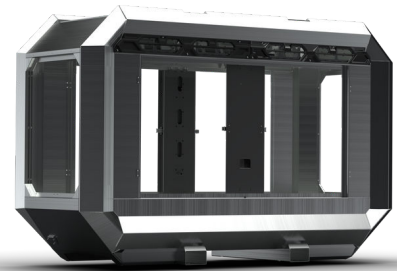
Silent canopy

Canopy type: **Stackable**
Material: **Hot dip galvanized Steel**
Dimensions LxWxH: **2299x1100x1601 mm / 90.5x43.3x63 in**
Lifting point: **Single lifting point**
Forklift pockets: **Installed**



Open canopy

Canopy type: **Stackable**
Material: **Hot dip galvanized Steel**
Dimensions LxWxH: **2299x1100x1601 mm / 90.5x43.3x63 in**
Lifting point: **Single lifting point**
Forklift pockets: **Installed**



CONTROL PANEL OPTIONS

Standard

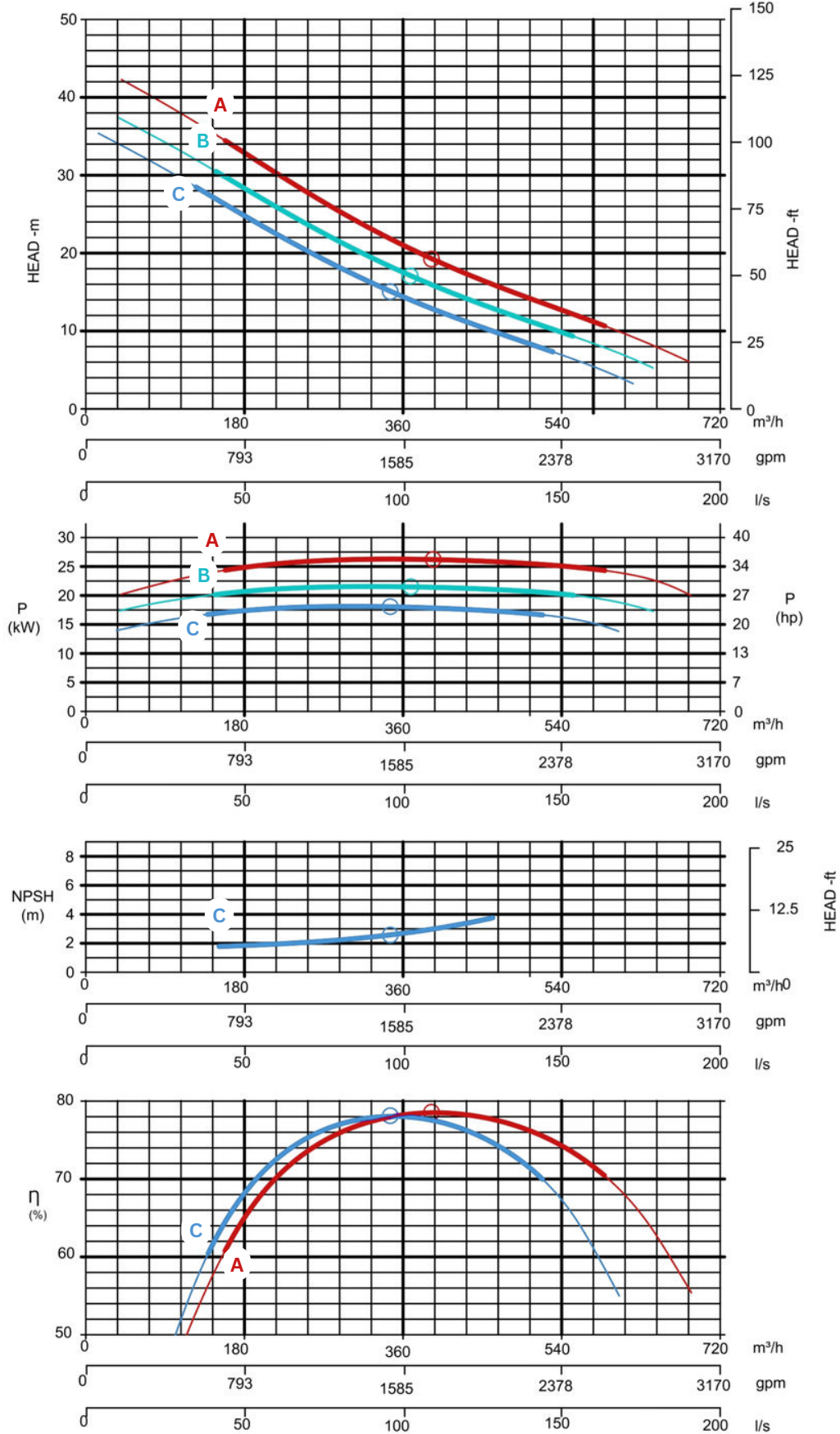
AEONPUMP Software
Automatic level control
Hydrostatic level sensor*
SMS alarm system*
Online telemetry*
Dual float switch
Light Assistant*

* Optional





Curves at Speeds: A 1700 rpm B 1600 rpm C 1500 rpm



Note: Pump power P include mechanical seal friction and bearing frame losses, from a run in bearing frame. (Testing according ISO 9906:2012-38)