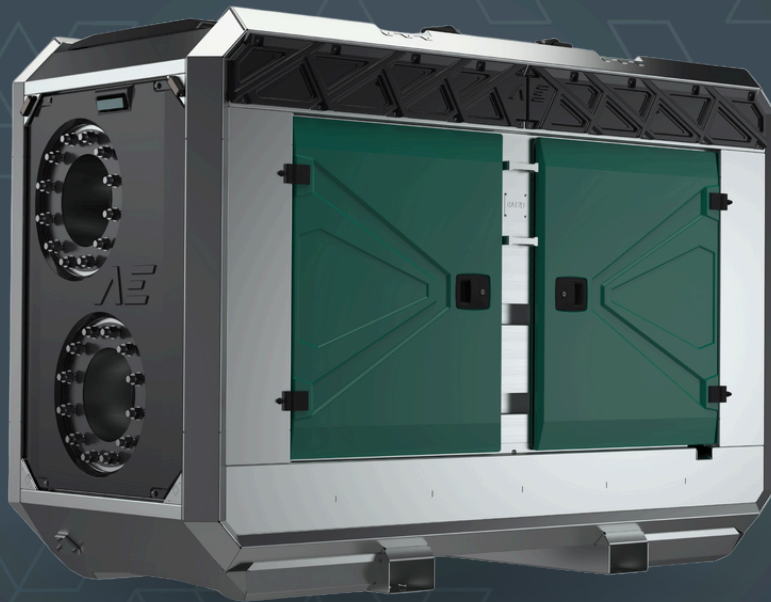


**AEDONPUMP**

# RAPTOR 6D ULTRAHIGH



**DIESEL**

**DRIVEN SEWAGE  
AND DEWATERING PUMP**

V3.25

## FEATURES AND COMPETITIVE EDGE

Type: **Raptor 6D ULTRAHIGH**  
 Connection size: **6 in x 6 in**

Frame LxWxH: **2700x1150x1820 mm / 106.3x45.3x71.7 in**

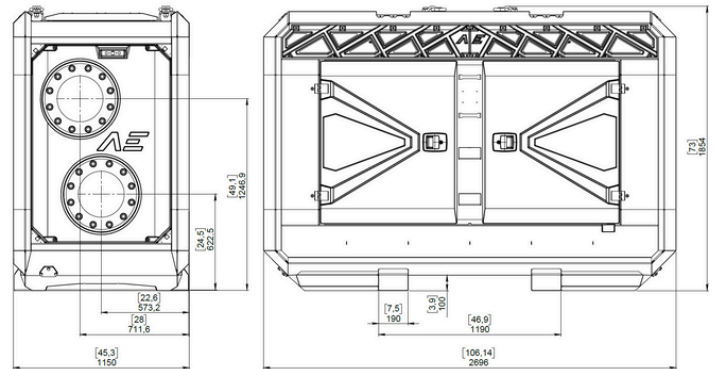
Dry weight: **3500 kg / 7720 lbs**

Fuel tank capacity: **400 L / 106 US gal**

Sound level: **64 dB at 10 m/at 33 ft**

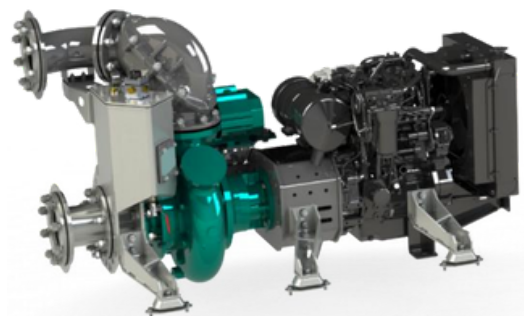
**Designed for heavy duty applications.**  
**Sewage bypass, drainage and dewatering:**

- Extended maintenance intervals;
- High-grade parts of superior quality;
- Online telemetry and remote access capability;
- Unsurpassed efficiency values that set the industry standard.



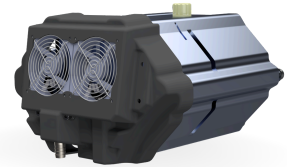
## PUMP TECHNICAL SPECIFICATION

**Pump** Max. flow: **558 m<sup>3</sup>/h / 2460 US gpm**  
 Max. head: **82 m / 270 ft / 117 PSI**  
 Impeller type: **Screw impeller**  
 Solids handling: **75 mm / 2.95 in**  
 Temperature: **max. 40°C / 104°F**  
 Casing: **GG25 (0.6025)**  
 Impeller: **GGG60 (0.7060)**  
 Suction Liner: **GG20 (0.6020)**  
 Wear Ring: **GG20 (0.6020)**  
 Shaft: **1.4021**  
 Shaft Sealing: **WC/SiC/NBR**  
 O-Rings: **NBR**  
 Suction liner adjustable by external regulation screws



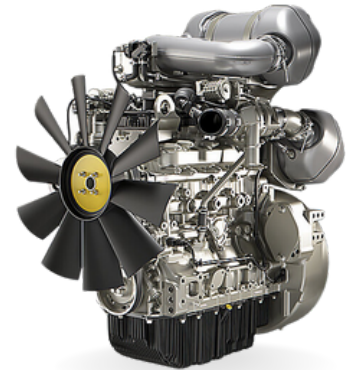


**Priming System**  
Pump type: **dry claw vacuum pump**  
Air handling capacity: **60 m<sup>3</sup>/h / 35 CFM**  
Max. vacuum: **9.0 m / 30 ft**  
Floatbox: **Hot dip galvanized Steel**  
Non-return valve: **Ductile iron GJS400**  
Check valve ball: **Rubber NBR**



## ENGINE OPTIONS

**Standard**  
Model: **Perkins 904J-E36TA**  
Emission standard: **Stage V/ Tier 4f**  
Cylinders: **4**  
Displacement litres: **3.6 L / 219.7 cu. in.**  
Bore and stroke: **98 x 120 mm / 3.86x4.72 in**  
Maximum power: **100 kW / 134.1 hp @1500 rpm**  
Variable speed: **2000 - 2400 rpm**  
Combustion system: **Direct injection**  
Exhaust after treatment: **DOC, DPF**

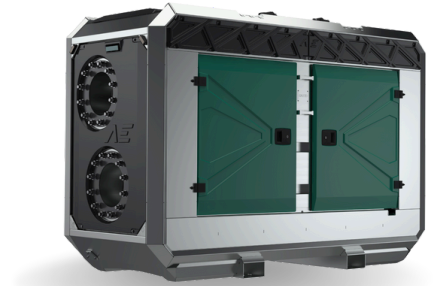


## FRAME OPTIONS

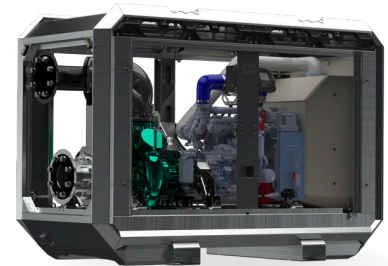
**Silent canopy**

Canopy type: **Stackable**  
Material: **Hot dip galvanized Steel**  
Dimensions LxWxH: **2700x1150x1820 mm / 106.3x45.3x71.7 in**  
Lifting point: **Single lifting point**  
Forklift pockets: **Installed**

---

**Open canopy**

Canopy type: **Stackable**  
Material: **Hot dip galvanized Steel**  
Dimensions LxWxH: **2700x1150x1820 mm / 106.3x45.3x71.7 in**  
Lifting point: **Single lifting point**  
Forklift pockets: **Installed**



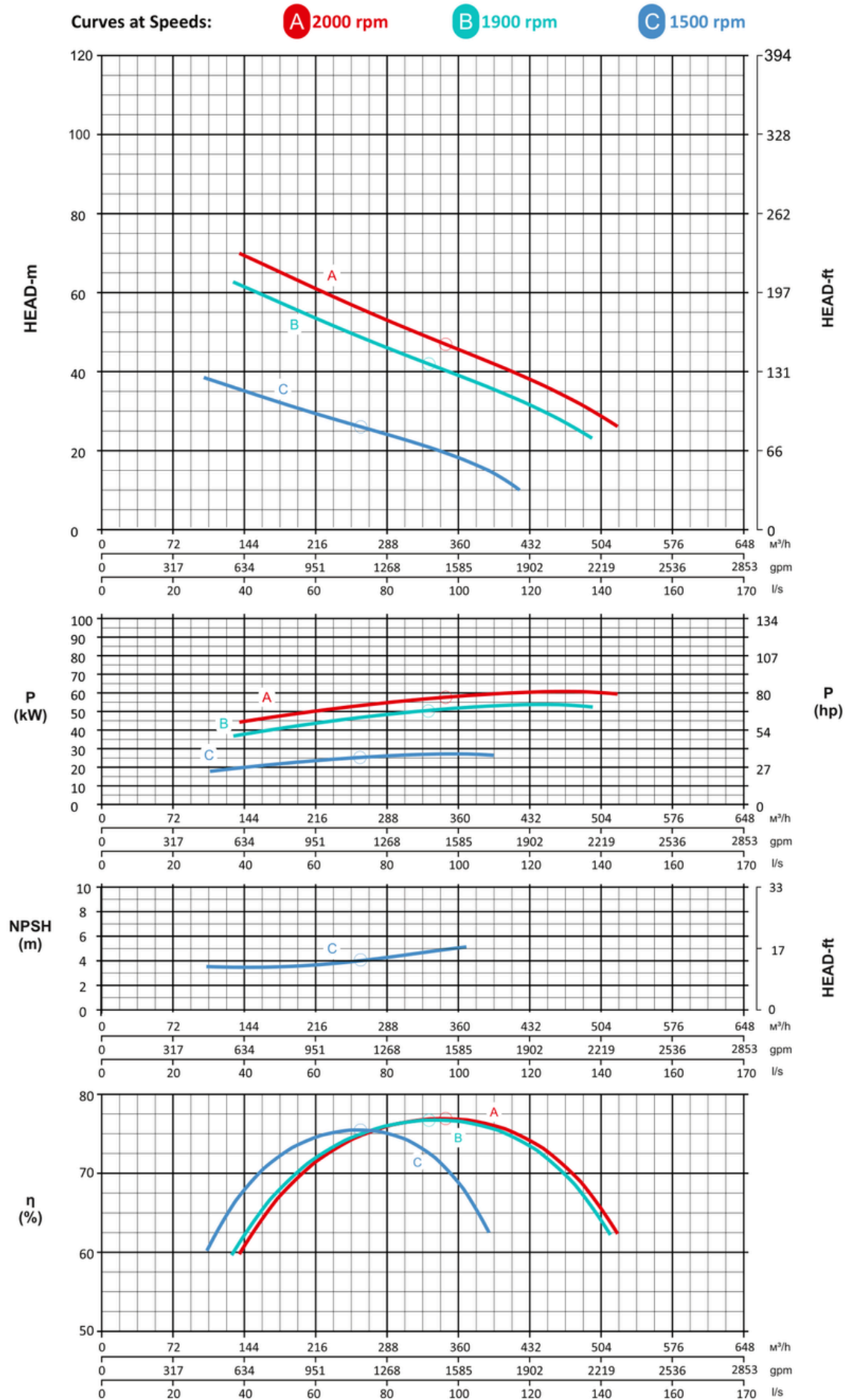
## CONTROL PANEL OPTIONS

**Standard**

AEONPUMP Software  
Automatic level control  
Hydrostatic level sensor\*  
SMS alarm system\*  
Online telemetry\*  
Dual float switch  
Light Assistant\*

\* Optional





Note: Pump power P include mechanical seal friction and bearing frame losses, from a run in bearing frame.