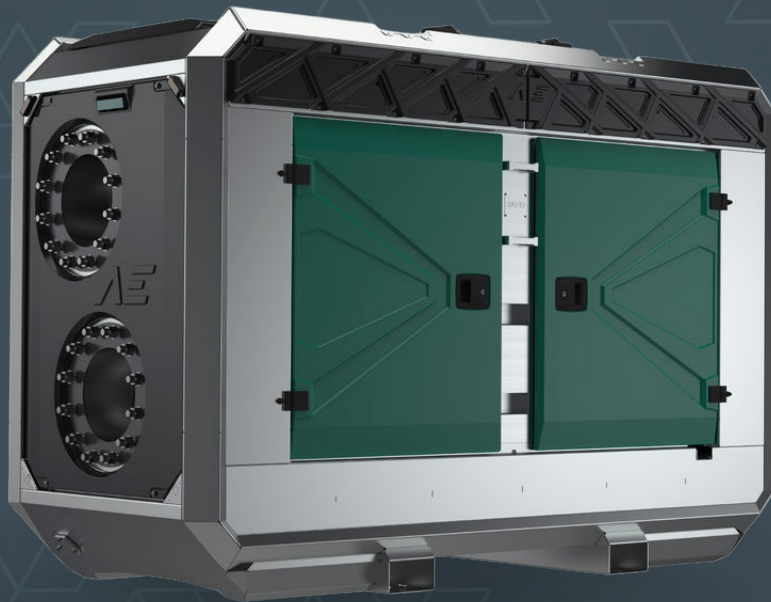


AEDONPUMP

RAPTOR 6D ULTRAHIGH



DIESEL

**DRIVEN SEWAGE
AND DEWATERING PUMP**

V3.25

FEATURES AND COMPETITIVE EDGE

Type: **Raptor 6D ULTRAHIGH**
 Connection size: **6 in x 6 in**

Frame LxWxH: **2700x1150x1820 mm / 106.3x45.3x71.7 in**

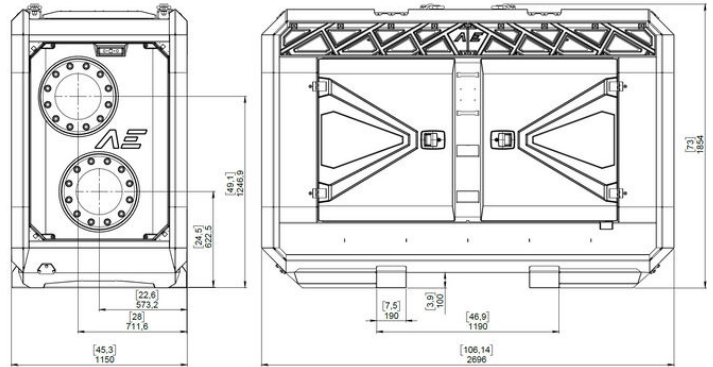
Dry weight: **3500 kg / 7720 lbs**

Fuel tank capacity: **400 L / 106 US gal**

Sound level: **64 dB at 10 m/at 33 ft**

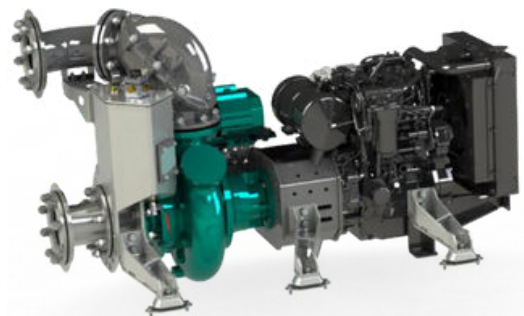
Designed for heavy duty applications. Sewage bypass, drainage and dewatering:

- Extended maintenance intervals;
- High-grade parts of superior quality;
- Online telemetry and remote access capability;
- Unsurpassed efficiency values that set the industry standard.



PUMP TECHNICAL SPECIFICATION

Pump Max. flow: **558 m³/h / 2460 US gpm**
 Max. head: **82 m / 270 ft / 117 PSI**
 Impeller type: **Screw impeller**
 Solids handling: **75 mm / 2.95 in**
 Temperature: **max. 40°C / 104°F**
 Casing: **GG25 (0.6025)**
 Impeller: **GGG60 (0.7060)**
 Suction Liner: **GG20 (0.6020)**
 Wear Ring: **GG20 (0.6020)**
 Shaft: **1.4021**
 Shaft Sealing: **WC/SiC/NBR**
 O-Rings: **NBR**
 Suction liner adjustable by external regulation screws





Priming System Pump type: **dry claw vacuum pump**
Air handling capacity: **60 m³/h / 35 CFM**
Max. vacuum: **9.0 m / 30 ft**
Floatbox: **Hot dip galvanized Steel**
Non-return valve: **Ductile iron GJS400**
Check valve ball: **Rubber NBR**



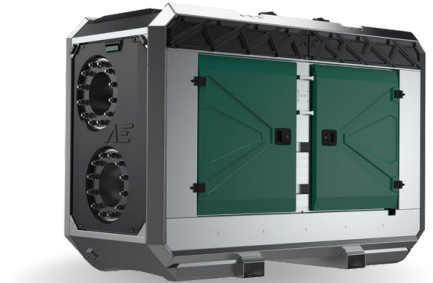
ENGINE OPTIONS

Standard Model: **Perkins 904J-E36TA**
Emission standard: **Stage V/ Tier 4f**
Cylinders: **4**
Displacement litres: **3.6 L / 219.7 cu. in.**
Bore and stroke: **98 x 120 mm / 3.86x4.72 in**
Maximum power: **100 kW / 134.1 hp @1500 rpm**
Variable speed: **2000 - 2400 rpm**
Combustion system: **Direct injection**
Exhaust after treatment: **DOC, DPF**

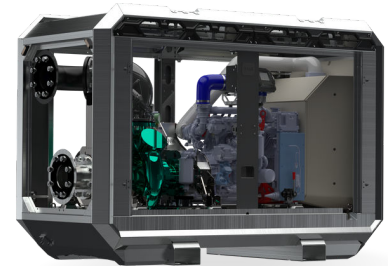


FRAME OPTIONS

Silent canopy Canopy type: **Stackable**
Material: **Hot dip galvanized Steel**
Dimensions LxWxH: **2700x1150x1820 mm / 106.3x45.3x71.7 in**
Lifting point: **Single lifting point**
Forklift pockets: **Installed**



Open canopy Canopy type: **Stackable**
Material: **Hot dip galvanized Steel**
Dimensions LxWxH: **2700x1150x1820 mm / 106.3x45.3x71.7 in**
Lifting point: **Single lifting point**
Forklift pockets: **Installed**

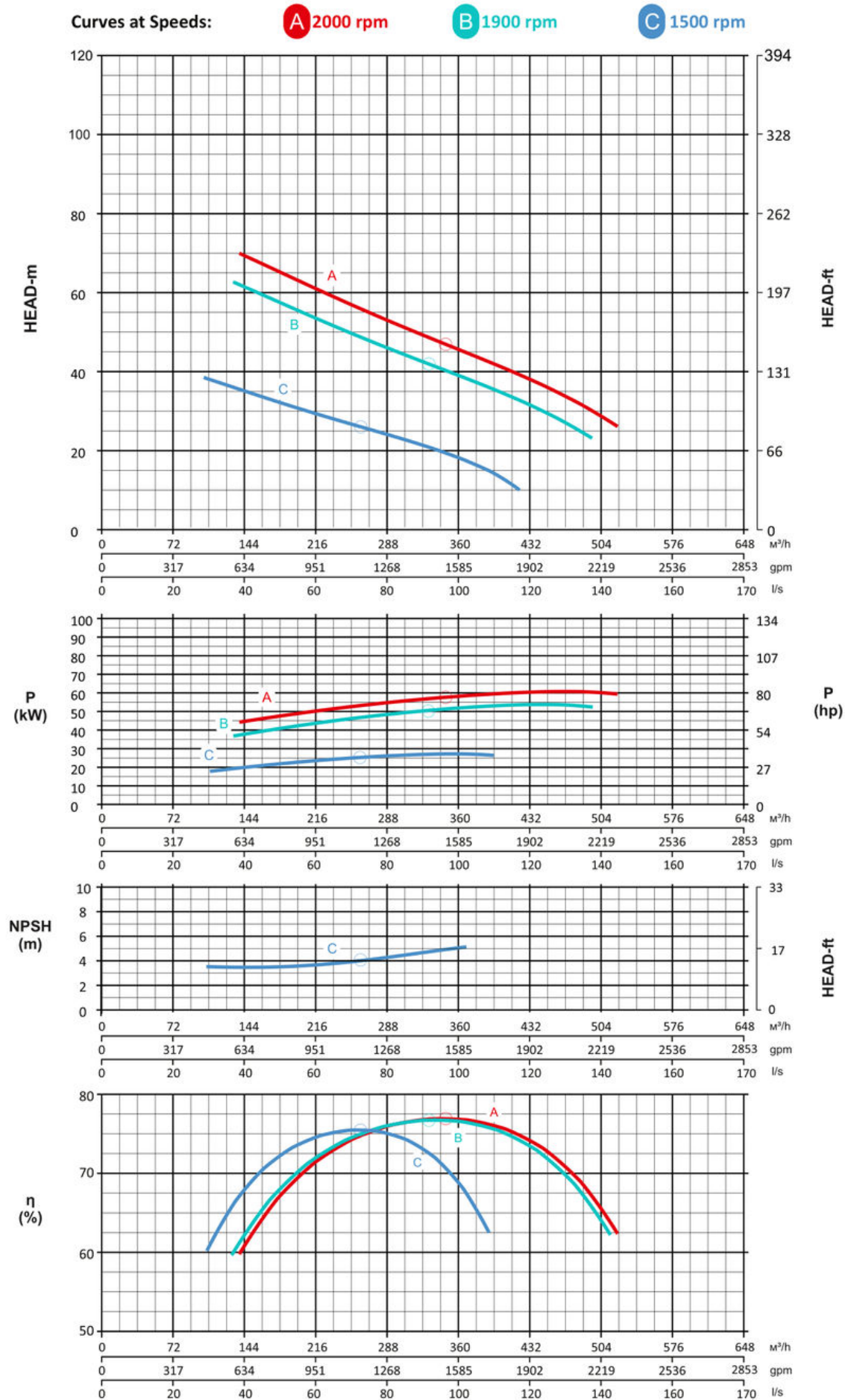


CONTROL PANEL OPTIONS

Standard AEONPUMP Software
Automatic level control
Hydrostatic level sensor*
SMS alarm system*
Online telemetry*
Dual float switch
Light Assistant*

* Optional





Note: Pump power P include mechanical seal friction and bearing frame losses, from a run in bearing frame.