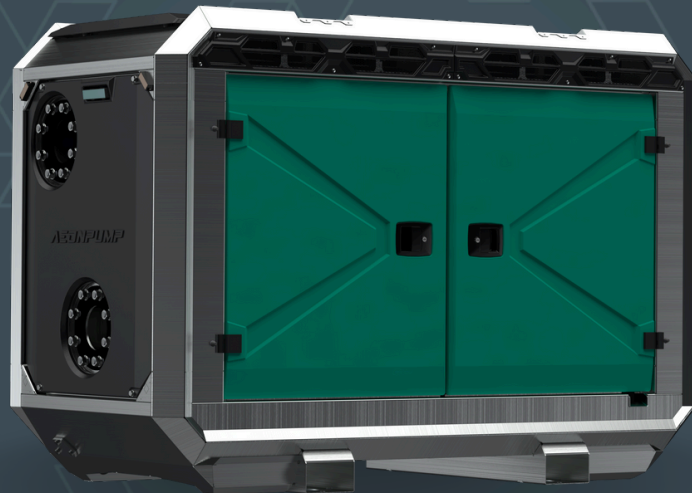


**AEDONPUMP**

# RAPTOR 4D ULTRAHIGH



**DIESEL**

**DRIVEN SEWAGE  
AND DEWATERING PUMP**

V2.25

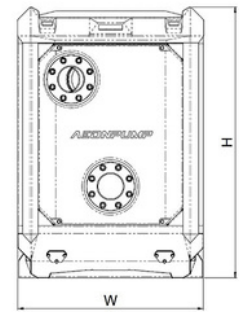
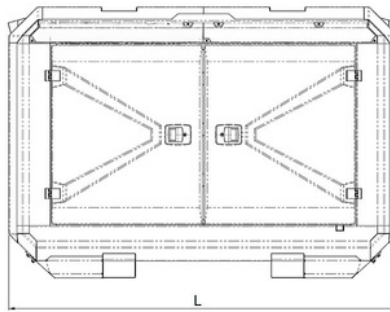
## FEATURES AND COMPETITIVE EDGE

Type: **Raptor 4D ULTRAHIGH**  
Connection size: **4 in x 4 in**

Frame LxWxH: **2299x1100x1601 mm / 90.51x43.31x63.03 in**  
Dry weight: **1500 kg / 3300 lbs**  
Fuel tank capacity: **270 L / 71 US gal**  
Sound level: **48dB at 10 m/at 33 ft**

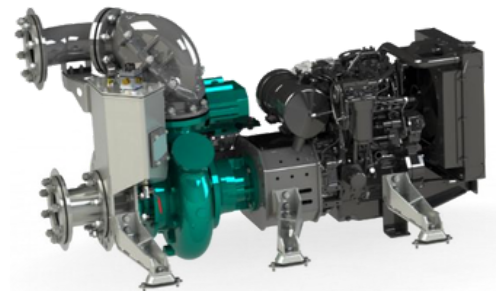
**Designed for heavy duty applications.  
Sewage bypass, drainage and dewatering:**

- Extended maintenance intervals;
- High-grade parts of superior quality;
- Online telemetry and remote access capability;
- Unsurpassed efficiency values that set the industry standard.



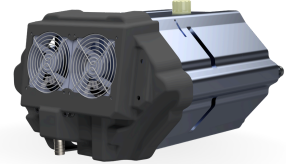
## PUMP TECHNICAL SPECIFICATION

**Pump** Max. flow: **324 m<sup>3</sup>/h / 1425 US gpm**  
Max. head: **100 m / 330 ft / 140 PSI**  
Impeller type: **Screw impeller**  
Solids handling: **76 mm / 3 in**  
Temperature: **max. 40°C / max 104°F**  
Casing: **GG25 (0.6025)**  
Impeller: **GGG60 (0.7060)**  
Suction Liner: **GG20 (0.6020)**  
Suction liner adjustable by external regulation screws  
Wear Ring: **GG20 (0.6020)**  
Shaft: **1.4021**  
Shaft Sealing: **WC/SiC/NBR**  
O-Rings: **NBR**



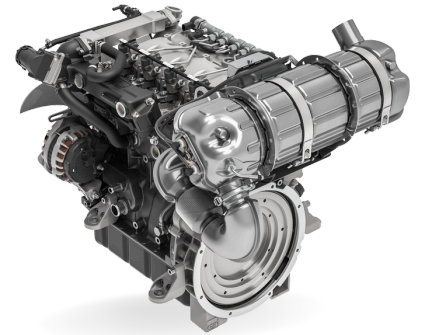


**Priming System** Pump type: **dry claw vacuum pump**  
Air handling capacity: **60 m<sup>3</sup>/h / 35 CFM**  
Max. vacuum: **9.0 m / 30 ft**  
Floatbox: **Hot dip galvanized Steel**  
Non-return valve: **Ductile iron GJS400**  
Check valve ball: **Rubber NBR**



## ENGINE OPTIONS

**Standard** Model: **Hatz 4H50TICD / 4H50TIC / 4H50TI**  
Emission standard: **Stage V/ Tier 4f/ Stage III**  
Cylinders: **4**  
Displacement litres: **1.952 L / 119.1 cu.in.**  
Bore and stroke mm: **84 x 88 mm / 3.31x3.46 in**  
Maximum power: **45 kW / 60 hp @2800 rpm**  
Variable speed: **2500 - 2800 rpm**  
Combustion system: **Direct injection with Bosch off-highway common-rail system**



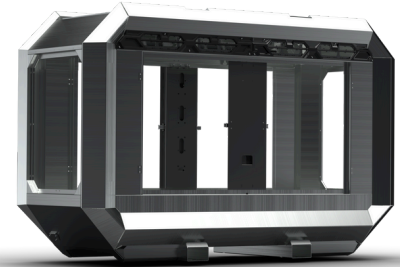
### FRAME OPTIONS

**Silent canopy** Canopy type: **Stackable**  
Material: **Hot dip galvanized Steel**  
Dimensions LxWxH: **2299x1100x1601 mm / 90.51x43.31x63.03 in**  
Lifting point: **Single lifting point**  
Forklift pockets: **Installed**

---



**Open canopy** Canopy type: **Stackable**  
Material: **Hot dip galvanized Steel**  
Dimensions LxWxH: **2299x1100x1601 mm / 90.51x43.31x63.03**  
Lifting point: **Single lifting point**  
Forklift pockets: **Installed**



### CONTROL PANEL OPTIONS

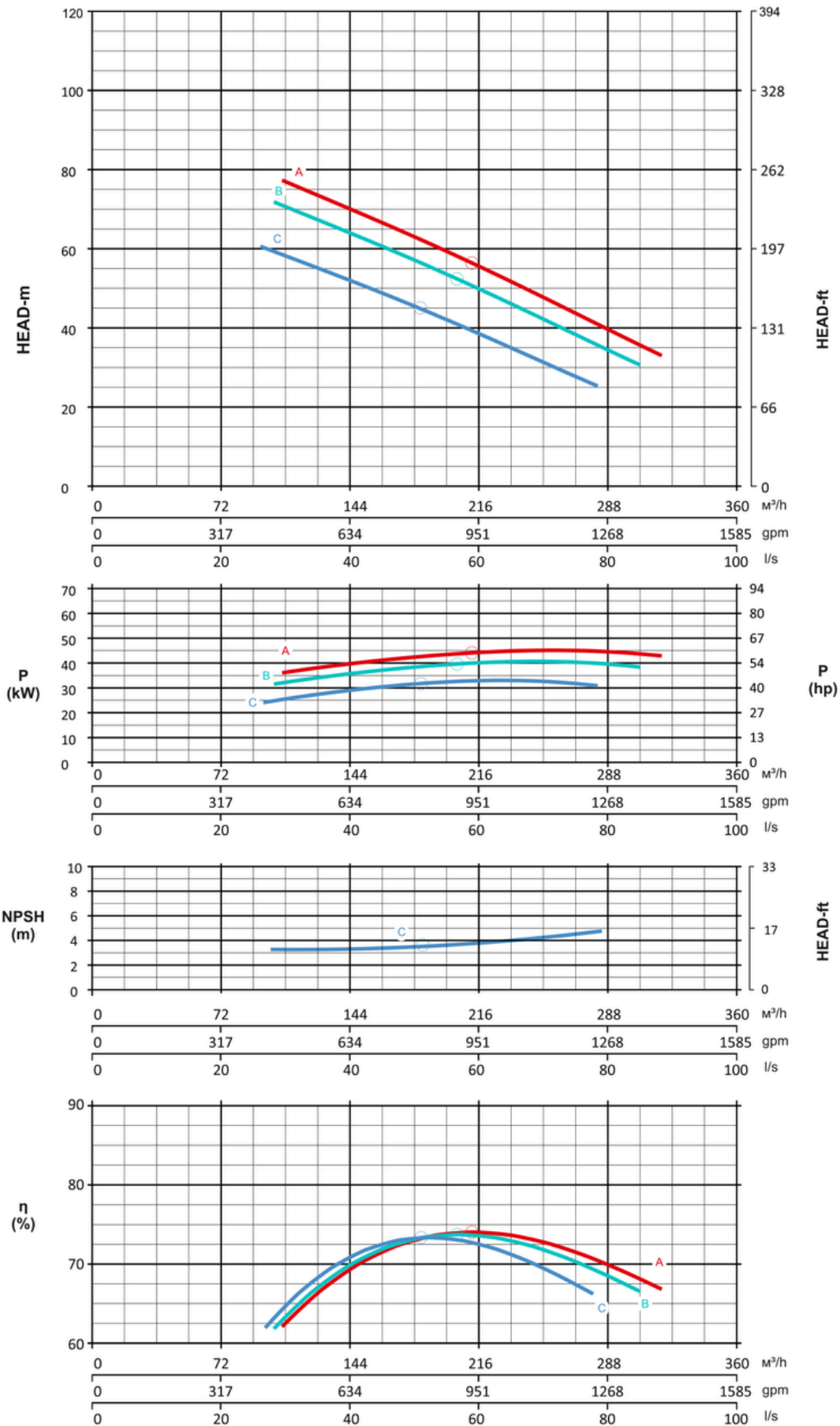
**Standard** AEONPUMP Software  
Automatic level control  
Hydrostatic level sensor\*  
SMS alarm system\*  
Online telemetry\*  
Dual float switch  
Light Assistant\*

\* Optional





Curves at Speeds: **A** 2800 rpm    **B** 2700 rpm    **C** 2500 rpm



Note: Pump power P include mechanical seal friction and bearing frame losses, from a run in bearing frame.