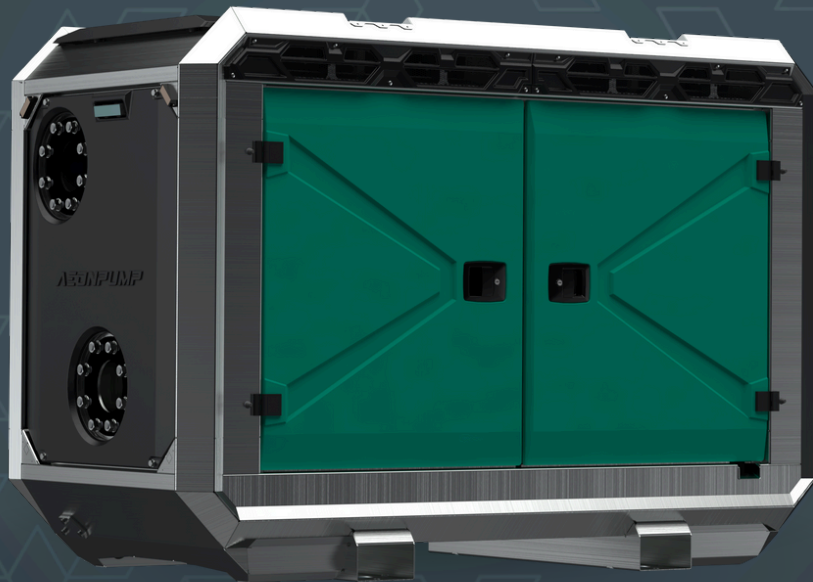


AEDONPUMP

RAPTOR 4D SUPERHEAVY



DIESEL

**DRIVEN SEWAGE
AND DEWATERING PUMP**

V4.25

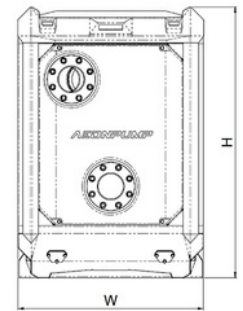
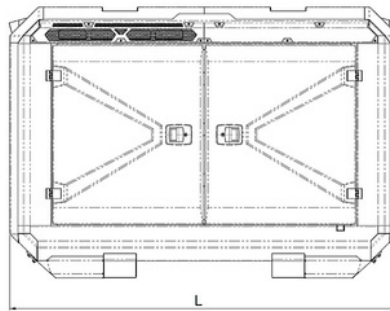
FEATURES AND COMPETITIVE EDGE

Type: **Raptor 4D SUPERHEAVY**
Connection size: **4 in x 4 in / 6 in x 6 in**

Frame LxWxH: **2300 x 1000 x 1400 mm / 90.6 in x 39.4 in x 55.1 in**
Dry weight: **1200 kg / 2650 lbs**
Fuel tank capacity: **200 L / 53 US gal**
Sound level: **48dB at 10 m / 33 ft**

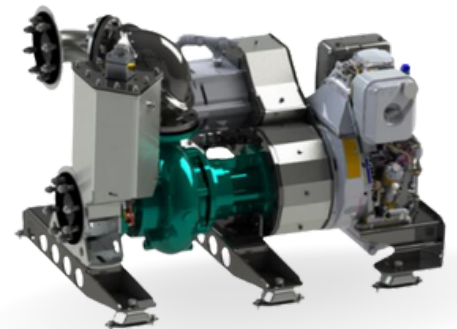
Designed for heavy duty applications.
Sewage bypass, drainage and dewatering:

- Extended maintenance intervals;
- High-grade parts of superior quality;
- Online telemetry and remote access capability;
- Unsurpassed efficiency values that set the industry standard.



PUMP TECHNICAL SPECIFICATION

Pump Max. flow: **230 m³/h / 1013 US gpm**
Max. head: **30 m / 98 ft / 43 PSI**
Impeller type: **Screw impeller**
Solids handling: **100 mm / 3.94 in**
Temperature: **max. 40°C / max 104°F**
Casing: **GG25 (0.6025)**
Impeller: **GGG60 (0.7060)**
Suction Liner: **GG20 (0.6020)**
Suction liner adjustable by external regulation screws
Wear Ring: **GG20 (0.6020)**
Shaft: **1.4021**
Shaft Sealing: **WC/SiC/NBR**
O-Rings: **NBR**



Dual Vacuum Pump System

Priming System

Pump type: **dry claw vacuum pump**
Air handling capacity: **120 m³/h / 70 CFM**
Max. vacuum: **9.0 m / 12.8 PSI**
Floatbox: **Hot dip galvanized Steel**
Non-return valve: **Ductile iron GJS400**
Check valve ball: **Rubber NBR**
Additional Vacuum pump: **120m³/h / 70 CFM**
Total Air Capacity: **240m³/h / 140 CFM**



ENGINE OPTIONS

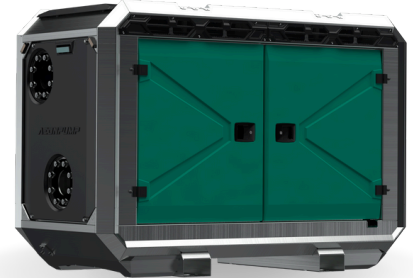
Standard

Model: **Hatz 4H50N**
Emission standard: **Stage V/ Tier 4f**
Cylinders: **4**
Displacement litres: **1.952 L / 119.1 cu.in.**
Bore and stroke mm: **84 x 88 mm / 3.31 in x 3.46 in**
Maximum power: **18.4 kW / 24.7 hp @2000 rpm**
Variable speed: **1500 - 2000 rpm**
Combustion system: **Direct injection with Bosch off-highway common-rail system**

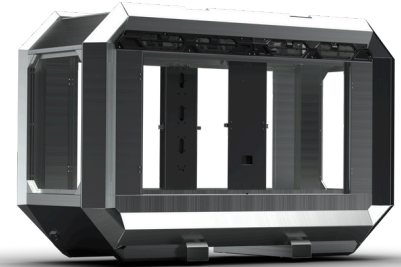


FRAME OPTIONS

Silent canopy Canopy type: **Stackable**
Material: **Hot dip galvanized Steel**
Dimensions LxWxH: **1634 x 990 x 1482 mm / 90.6 in x 39.4 in x 55.1 in**
Lifting point: **Single lifting point**
Forklift pockets: **Installed**



Open canopy Canopy type: **Stackable**
Material: **Hot dip galvanized Steel**
Dimensions LxWxH: **1634x990x1482 mm 90.6 in x 39.4 in x 55.1 in**
Lifting point: **Single lifting point**
Forklift pockets: **Installed**



CONTROL PANEL OPTIONS

Standard AEONPUMP Software
Automatic level control
Hydrostatic level sensor*
SMS alarm system*
Online telemetry*
Dual float switch
Light Assistant*

* Optional





1300

1400

1500

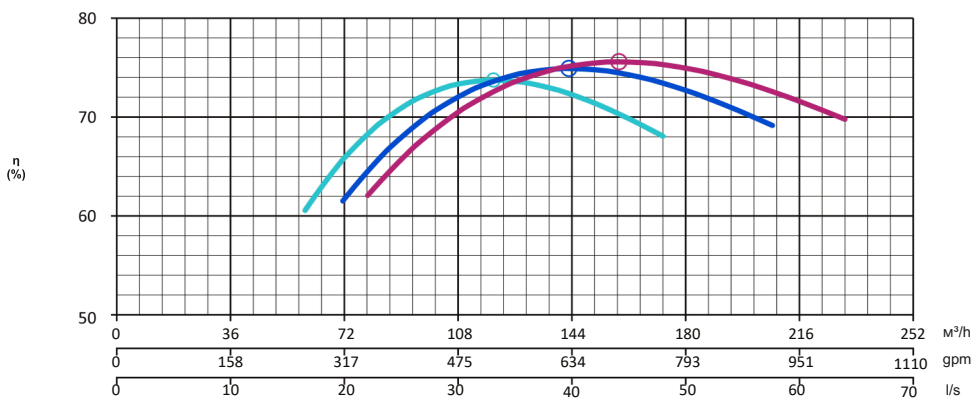
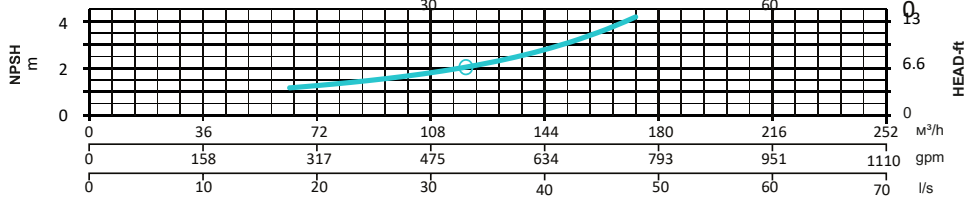
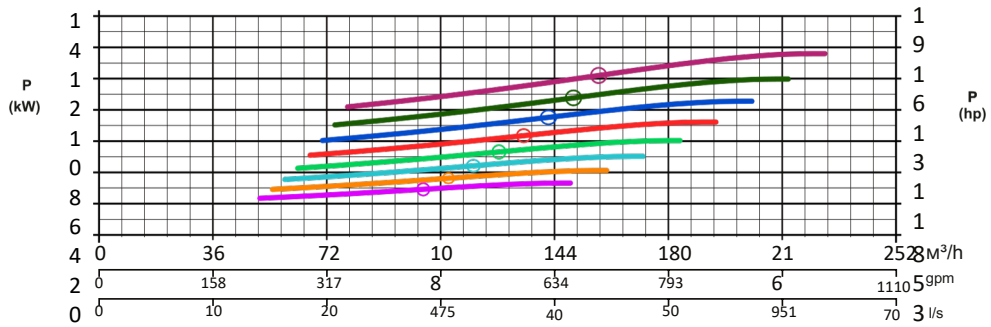
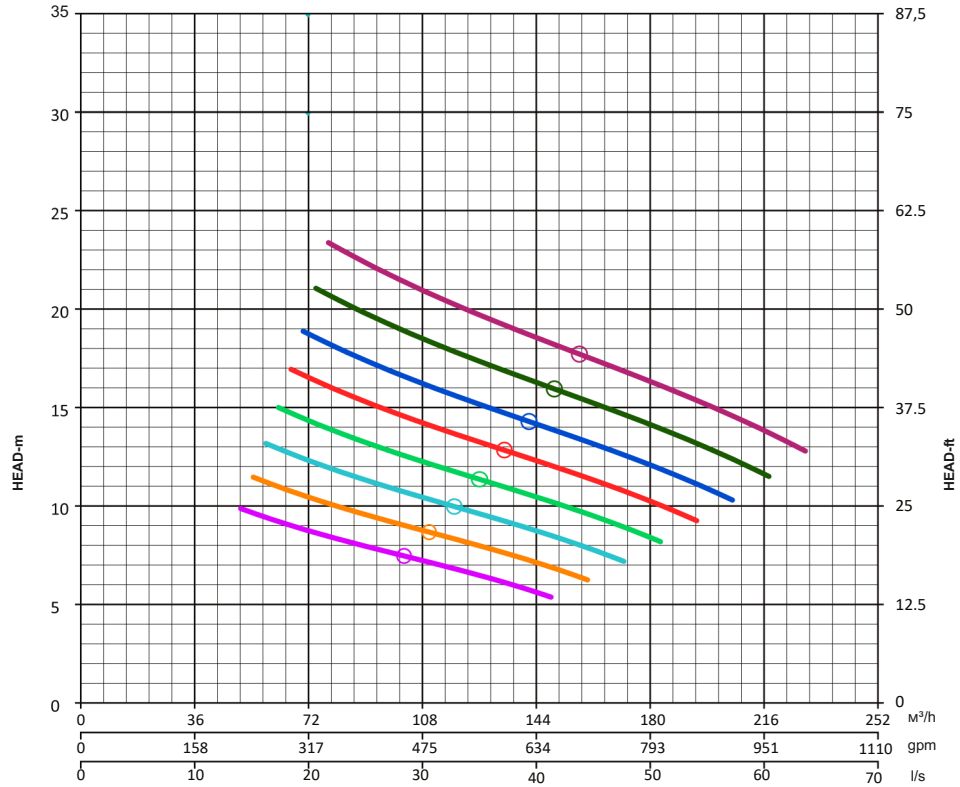
1600

1700

1800

1900

2000



Note: Pump power P include mechanical seal friction and bearing frame losses, from a run in bearing frame. (Testing according ISO 9906:2012-38)