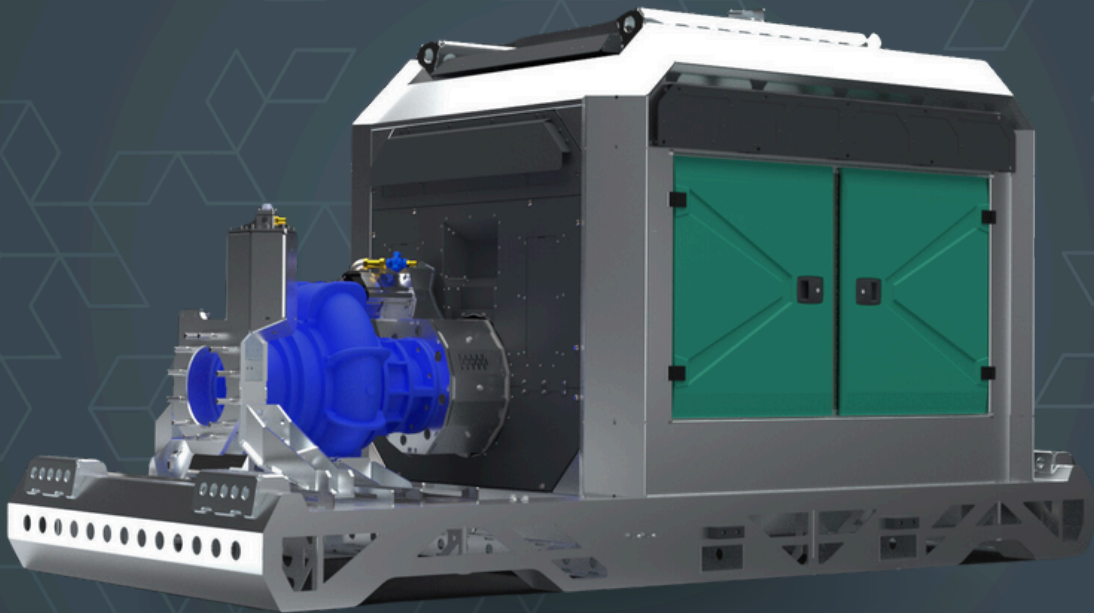


**AEDONPUMP**

# RAPTOR 12D ULTRAHIGH



**DIESEL**

**DRIVEN SEWAGE  
AND DEWATERING PUMP**

V2.25

## FEATURES AND COMPETITIVE EDGE

Type: **Raptor 12D ULTRAHIGH**

Connection size: **12 in / 8 in**

Frame LxWxH: **4500x2050x2400 mm / 177.2x80.7x94.5 in**

Dry weight: **6000 kg / 13200 lbs**

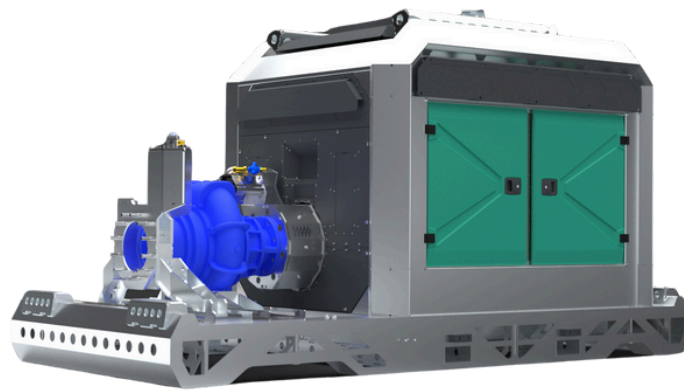
Fuel tank capacity: **400 L / 106 US gal**

Sound level: **76 dB at 10 m / 33 ft**

**Designed for heavy duty applications.**

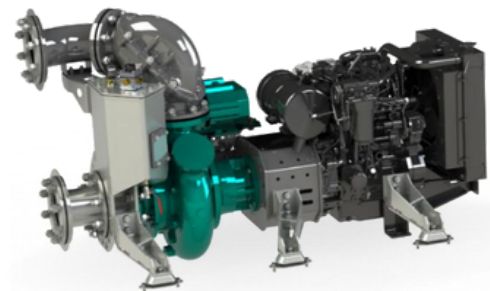
**Sewage bypass, drainage and dewatering:**

- Extended maintenance intervals;
- High-grade parts of superior quality;
- Online telemetry and remote access capability;
- Unsurpassed efficiency values that set the industry standard.



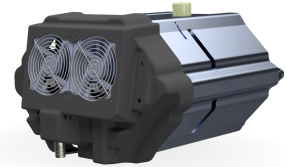
## PUMP TECHNICAL SPECIFICATION

**Pump** Max. flow: **2016 m<sup>3</sup>/h / 8880 US gpm**  
Max. head: **112 m / 367 ft / 160 PSI**  
Impeller type: **Screw impeller**  
Solids handling: **150 mm / 5.9 in**  
Temperature: **max. 40°C / 104°F**  
Casing: **GG25 (0.6025)**  
Impeller: **GGG60 (0.7060)**  
Suction Liner: **GG20 (0.6020)**  
Wear Ring: **GG20 (0.6020)**  
Shaft: **1.4021**  
Shaft Sealing: **WC/SiC/NBR**  
O-Rings: **NBR**  
Suction liner adjustable by external regulation screws



**Priming System**

Pump type: **dry claw vacuum pump**  
Air handling capacity: **60 m<sup>3</sup>/h / 35 CFM**  
Max. vacuum: **9.0 m / 30 ft**  
Floatbox: **Hot dip galvanized Steel**  
Non-return valve: **Ductile iron GJS400**  
Check valve ball: **Rubber NBR**

**ENGINE OPTIONS****Standard**

Model: **Volvo TAD1182VE**  
Emission standard: **Stage V / Tier 4f / Stage III**  
Cylinders: **6**  
Displacement litres: **10.84 L / 661 cu. in.**  
Bore and stroke: **123 x 152 mm / 4.84 x 5.98 in**  
Maximum power: **285 kW / 382 hp @1800 rpm**  
Variable speed: **1600 - 1800 rpm**  
Combustion system: **High-pressure common rail direct injection**  
Exhaust after treatment: **SCR, DPF+ DOC and uncooled EGR**

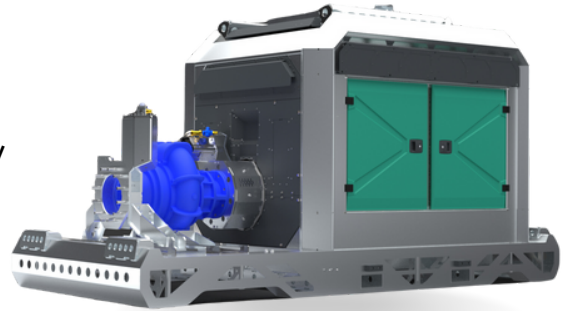


## FRAME OPTIONS

### Silent canopy

Canopy type: **Stackable**  
Material: **Hot dip galvanized Steel**  
Dimensions LxWxH: **4500x2050x2400 mm / 177.2x80.7x94.5 in**  
Lifting point: **Single lifting point**  
Forklift pockets: **Installed**

---



### Open canopy

Canopy type: **Stackable**  
Material: **Hot dip galvanized Steel**  
Dimensions LxWxH: **4500x2050x2400 mm / 177.2x80.7x94.5 in**  
Lifting point: **Single lifting point**  
Forklift pockets: **Installed**

## CONTROL PANEL OPTIONS

### Standard

AEONPUMP Software  
Automatic level control  
Hydrostatic level sensor\*  
SMS alarm system\*  
Online telemetry\*  
Dual float switch  
Light Assistant\*

\* Optional



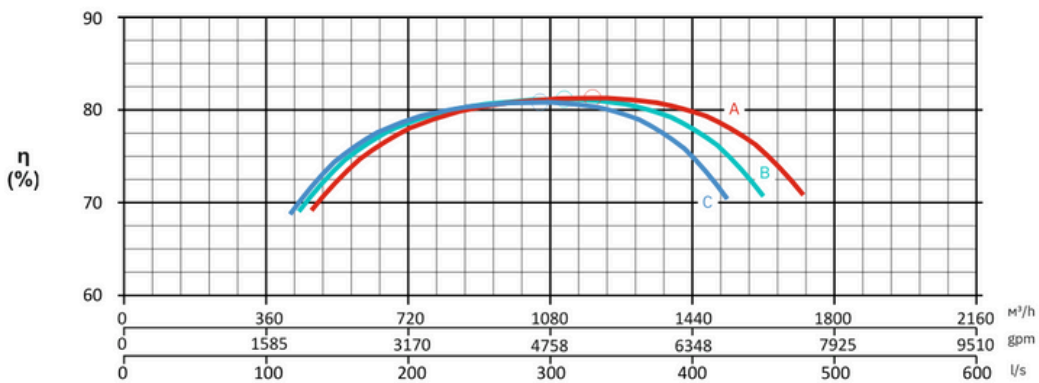
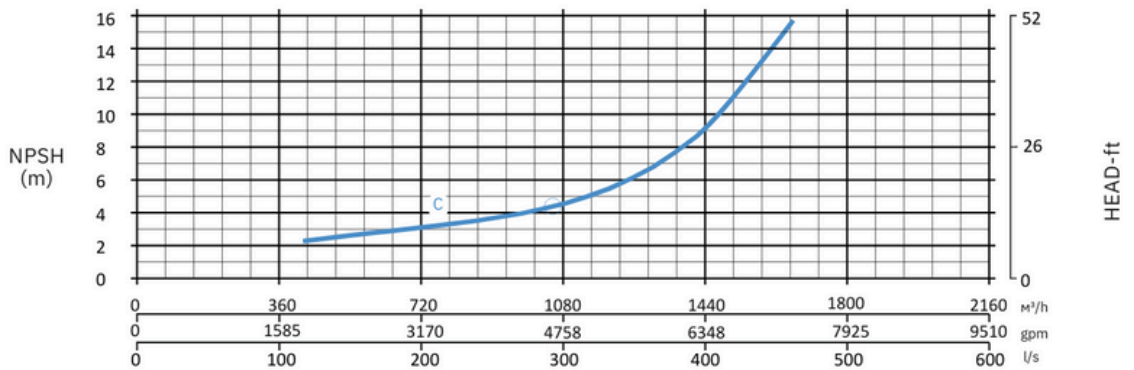
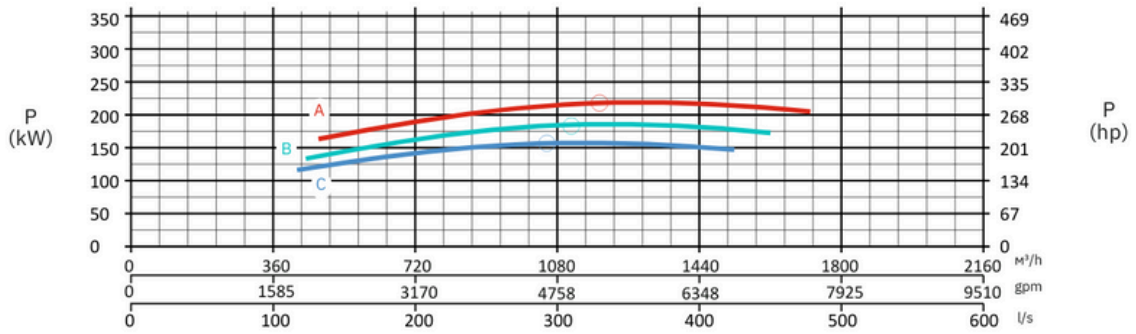
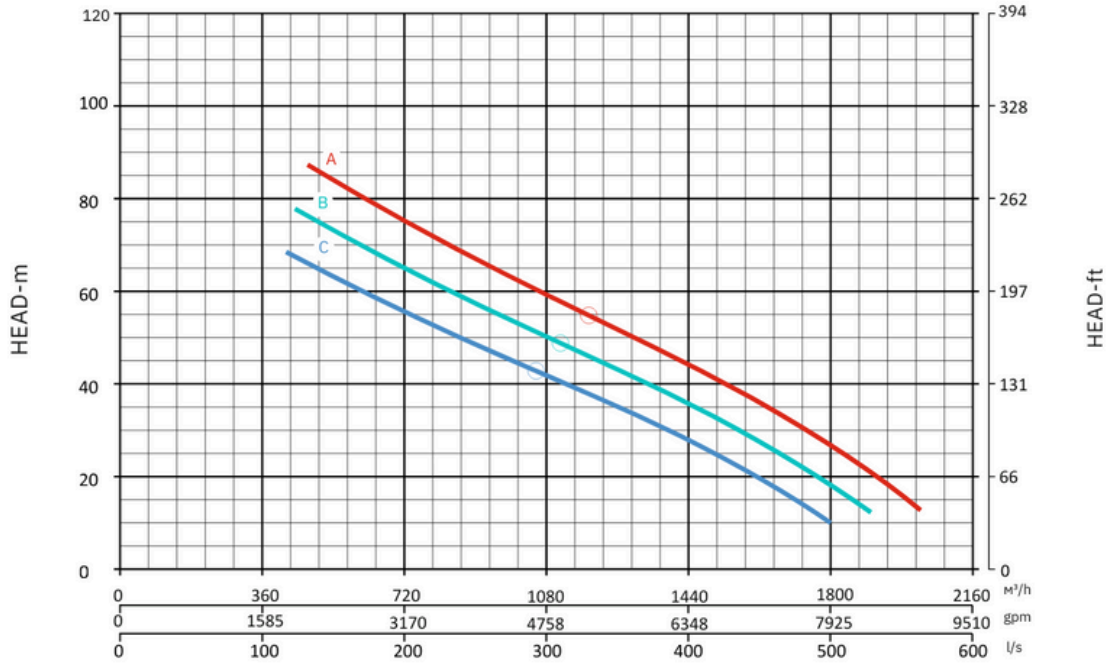


Curves at Speeds:

**A** 1800 rpm

**B** 1700 rpm

**C** 1600 rpm



Note: Pump power P include mechanical seal friction and bearing frame losses, from a run in bearing frame.