



ALWAYS INSIGHT; COMPLETE CONTROL

HydroPatrol, an advanced software platform for monitoring and optimizing water treatment systems. With HydroPatrol, users have real-time insight into the performance of their system and can quickly respond to anomalies and malfunctions. This increases operational reliability and helps optimize maintenance schedules.

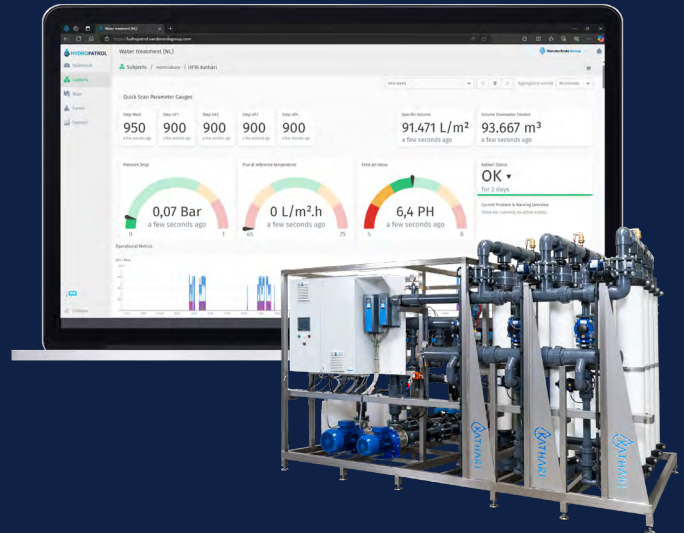
Advantages of HydroPatrol

- **Complete insight** into installation performance, anytime, anywhere.
- **Fast problem detection** with instant alerts in case of anomalies.
- **Predictive maintenance** through insight into trends and patterns.
- **Fewer unexpected costs** thanks to timely interventions.
- **Remote support**, reducing the need for physical service visits.
- **Easy to integrate**, making it suitable for both new and existing installations.

Practical application and accessibility

HydroPatrol is suitable for a variety of water treatment systems and can be easily integrated into both new and existing installations. The platform can be accessed through an online dashboard, allowing insight anytime, anywhere. All that is required to use HydroPatrol is an Internet connection via an UTP cable.

HydroPatrol continuously collects and analyzes data from the system and provides instant insight into performance parameters such as water quality, flow and pressure. Thanks to automatic alarms, anomalies are detected early, minimizing downtime and controlling maintenance costs. In addition, the platform enables remote intervention, making physical service visits unnecessary in many cases.



Optimize maintenance with data insight

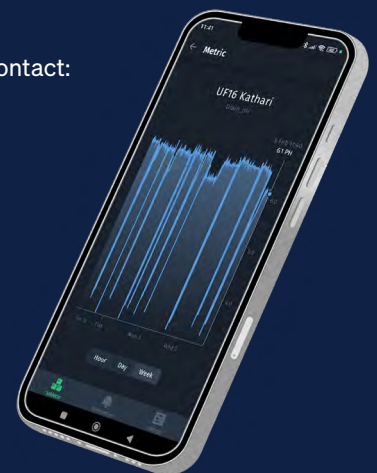
In addition to real-time monitoring, HydroPatrol analyzes trends and patterns in the data to accurately predict maintenance needs. This allows users to schedule maintenance at the right time, extending the lifespan of installations, preventing downtime, and reducing maintenance costs.

For more information, please contact:

www.vanderendegroup.com

sales@vanderendegroup.com

+31 174 51 50 50



HydroPatrol falls under Endeficial Intelligence. Endeficial Intelligence encompasses Van der Ende Group's smart technologies that make products more sustainable, efficient, and reliable.