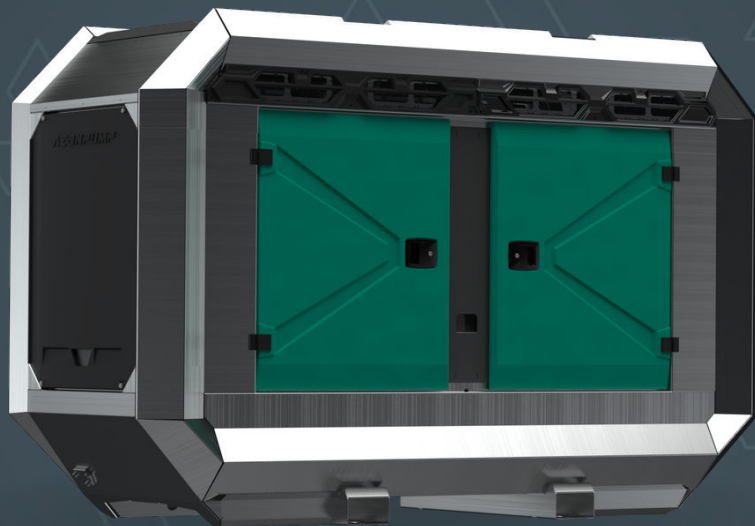


AEDONPUMP

RAPTOR 8E HEAVY



ELECTRICALLY

DRIVEN SEWAGE
AND DEWATERING PUMP

FEATURES AND COMPETITIVE EDGE

Type: **Raptor 8E Heavy**

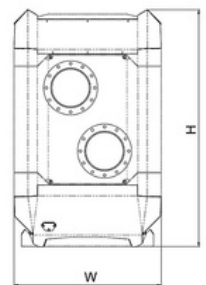
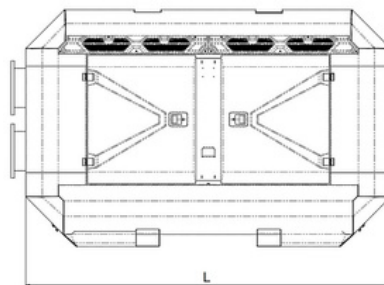
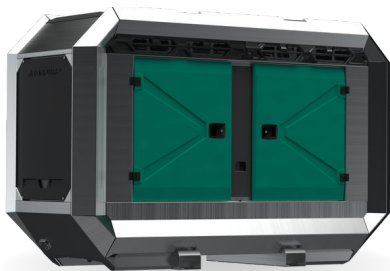
Connection size: **8"**

Frame LxWxH: **2700x1150x1820 mm
(106.3x45.3x71.7")**

Dry weight: **1900 kg (4188.78 lbs)**

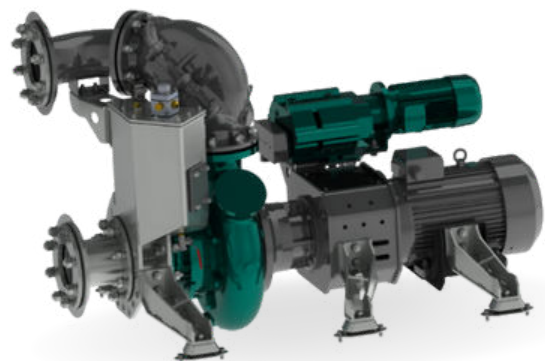
**Designed for heavy duty applications.
Sewage bypass, drainage and dewatering:**

- Extended maintenance intervals;
- High-grade parts of superior quality;
- Online telemetry and remote access capability;
- Unsurpassed efficiency values that set the industry standard.



PUMP TECHNICAL SPECIFICATION

Pump Max. flow: **630 m³/h (2772 gpm)**
Max. pressure: **40 m (131.23 feet)**
Impeller type: **Screw impeller**
Solids handling: **115 mm (4.5")**
Temperature: **max. 40°C (max 104°F)**
Wear Ring: **GG20 (0.6020)**
Shaft: **1.4021**
Shaft Sealing: **WC/SiC/NBR**
O-Rings: **NBR**
Casing: **GG25 (0.6025)**
Impeller: **GGG60 (0.7060)**
Suction Liner: **GG20 (0.6020)**
Suction liner adjustable by external regulation screws.





Electrical Motor Power: **30 kW (40.23 hp)**
Rated Voltage: **400/690V 50/60 Hz**
4-pole: **1483 rpm**



Priming System Pump type: **dry claw vacuum pump**
Air handling capacity: **60 m3/h (35 CFM)**
Max. vacuum: **9.0 m (29.5 feet)**
Electric motor: **1.3 kW (1.74 hp)**
Floatbox: **Hot dip galvanized Steel**
Non-return valve: **Ductile iron GJS400**
Check valve ball: **Rubber NBR**



ELECTRICAL MOTOR CONTROLLER OPTIONS

Standard Frequency converter

AEONPUMP Software
Automatic level control
Dual float switch
Hydrostatic level sensor *
SMS alarm system *
Online telemetry *

*Optional



Retro Star Delta

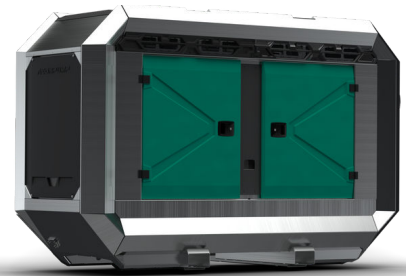
Dual float switch
Phase control
Hour meter
Socket 125 A



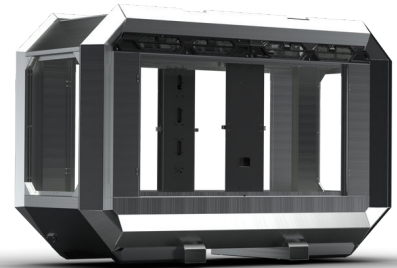


FRAME OPTIONS

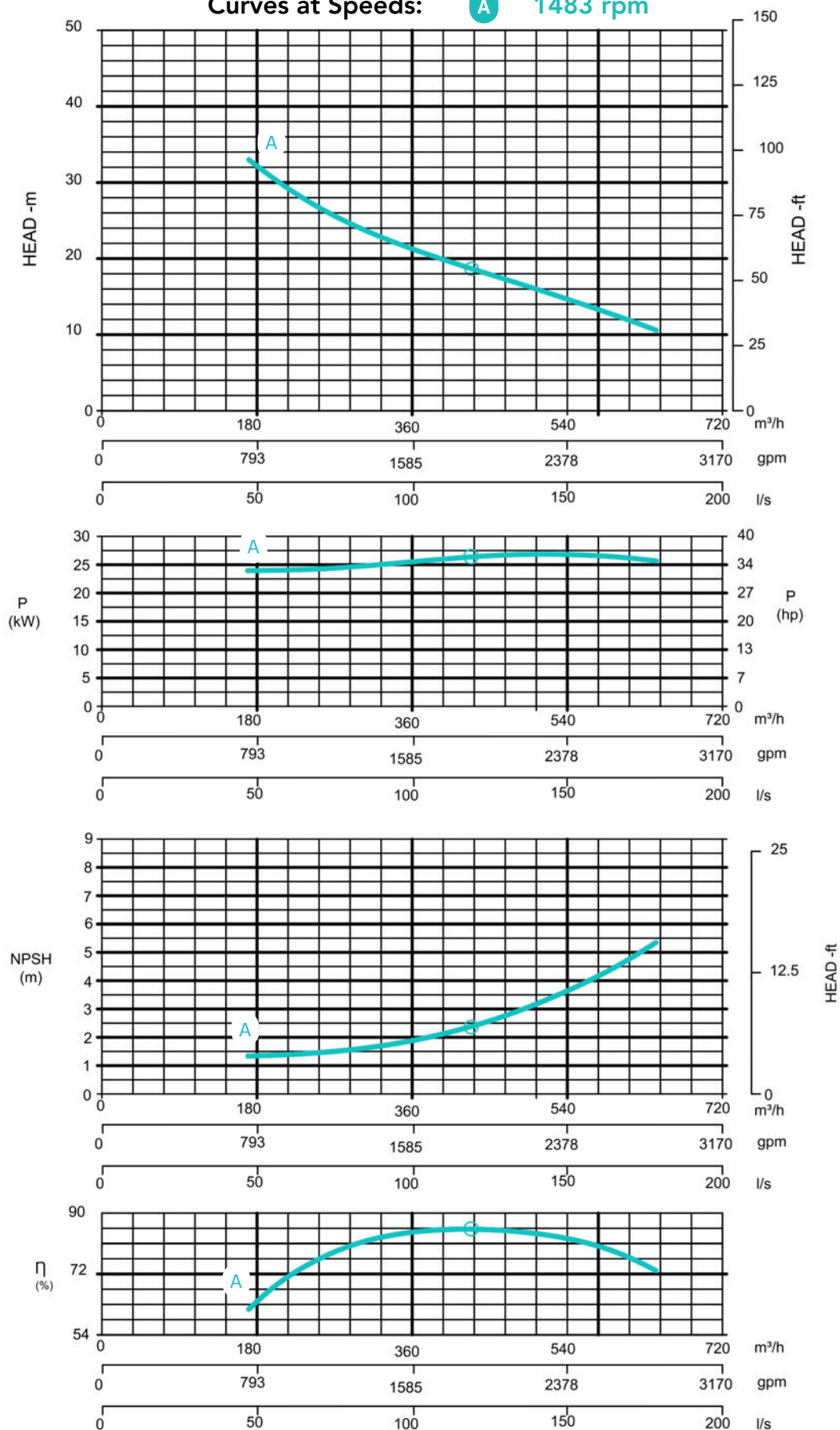
Silent Canopy Canopy type: **Stackable**
Material: **Hot dip galvanized steel**
Dimensions LxWxH: **2700x1150x1820 mm**
(90.51x43.31x63.03")
Lifting point: **Single lifting point**
Forklift pockets: **Installed**



Open Canopy Canopy type: **Stackable**
Material: **Hot dip galvanized steel**
Dimensions LxWxH: **2700x1150x1820 mm**
(90.51x43.31x63.03")
Lifting point: **Single lifting point**
Forklift pockets: **Installed**



Curves at Speeds: A 1483 rpm



Note: Pump power P include mechanical seal friction and bearing frame losses, from a run in bearing frame.
(Testing according ISO 9906:2012-38)