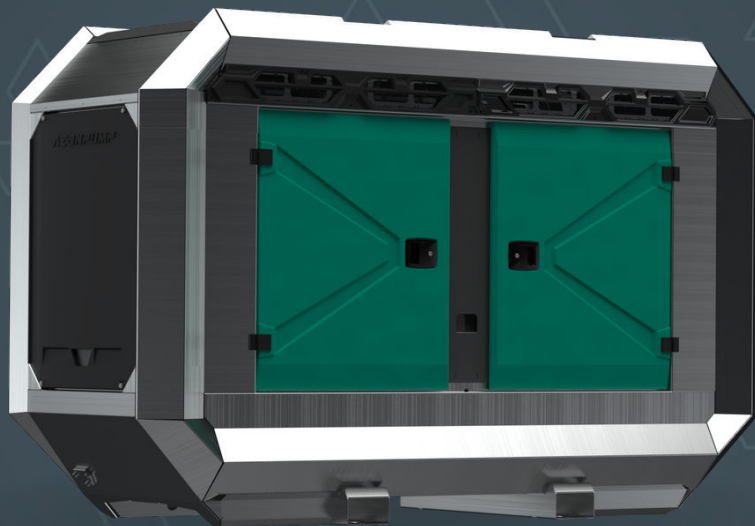


**AEDONPUMP**

# RAPTOR 8E



**ELECTRICALLY**

DRIVEN SEWAGE  
AND DEWATERING PUMP



## FEATURES AND COMPETITIVE EDGE

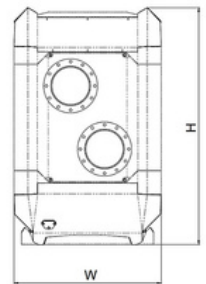
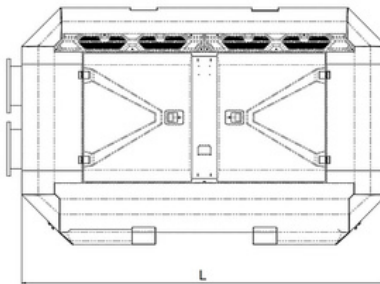
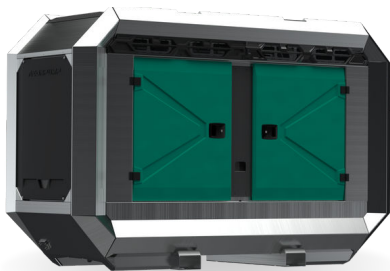
Type: **Raptor 8E**  
Connection size: **8"**

Frame LxWxH: **2299x1100x1601 mm**  
**(90.51x43.31x63.03")**  
Dry weight: **1800 kg (3968.32 lbs)**

---

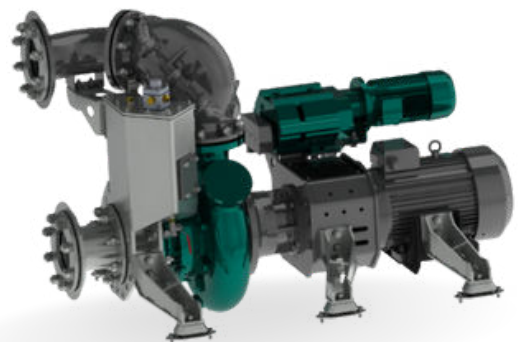
**Designed for heavy duty applications.**  
**Sewage bypass, drainage and dewatering:**

- Extended maintenance intervals;
- High-grade parts of superior quality;
- Online telemetry and remote access capability;
- Unsurpassed efficiency values that set the industry standard.



## PUMP TECHNICAL SPECIFICATION

**Pump** Max. flow: **500 m<sup>3</sup>/h (2200 gpm)**  
Max. pressure: **32 m (104.99 feet)**  
Impeller type: **Screw impeller**  
Solids handling: **115 mm (4.53")**  
Temperature: **max. 40 °C (max 104°F)**  
Wear Ring: **GG20 (0.6020)**  
Shaft: **1.4021**  
Shaft Sealing: **WC/SiC/NBR**  
O-Rings: **NBR**  
Casing: **GG25 (0.6025)**  
Impeller: **GGG60 (0.7060)**  
Suction Liner: **GG20 (0.6020)**  
Suction liner adjustable by external regulation screws.





**Electrical Motor** Power: **18.5 kW (24.81 hp)**  
Rated Voltage: **400/690V 50/60 Hz**  
4-pole: **1470 RPM**

---



**Priming System** Pump type: **dry claw vacuum pump**  
Air handling capacity: **60 m3/h (35 CFM)**  
Max. vacuum: **9.0 m (29.5 feet)**  
Electric motor: **1.3 kW (1.74 hp)**  
Floatbox: **Hot dip galvanized Steel**  
Non-return valve: **Ductile iron GJS400**  
Check valve ball: **Rubber NBR**



## ELECTRICAL MOTOR CONTROLLER OPTIONS

**Standard** Frequency converter

AEONPUMP Software  
Automatic level control  
Two float switch  
Hydrostatic level sensor \*  
SMS alarm system \*  
Online telemetry \*

\*Optional

---



**Retro** Star Delta

Dual float switch  
Phase control  
Hour meter  
Socket 125 A

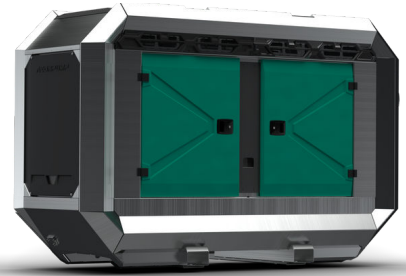




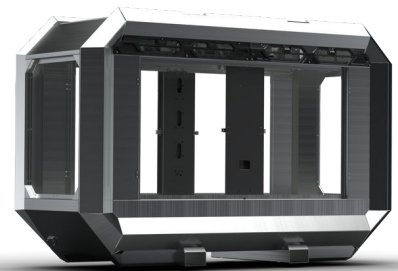
## FRAME OPTIONS

**Silent Canopy** Canopy type: **Stackable**  
Material: **Hot dip galvanized steel**  
Dimensions LxWxH: **2299x1100x1601 mm**  
(**90.51x43.31x63.03"**)  
Lifting point: **Single lifting point**  
Forklift pockets: **Installed**

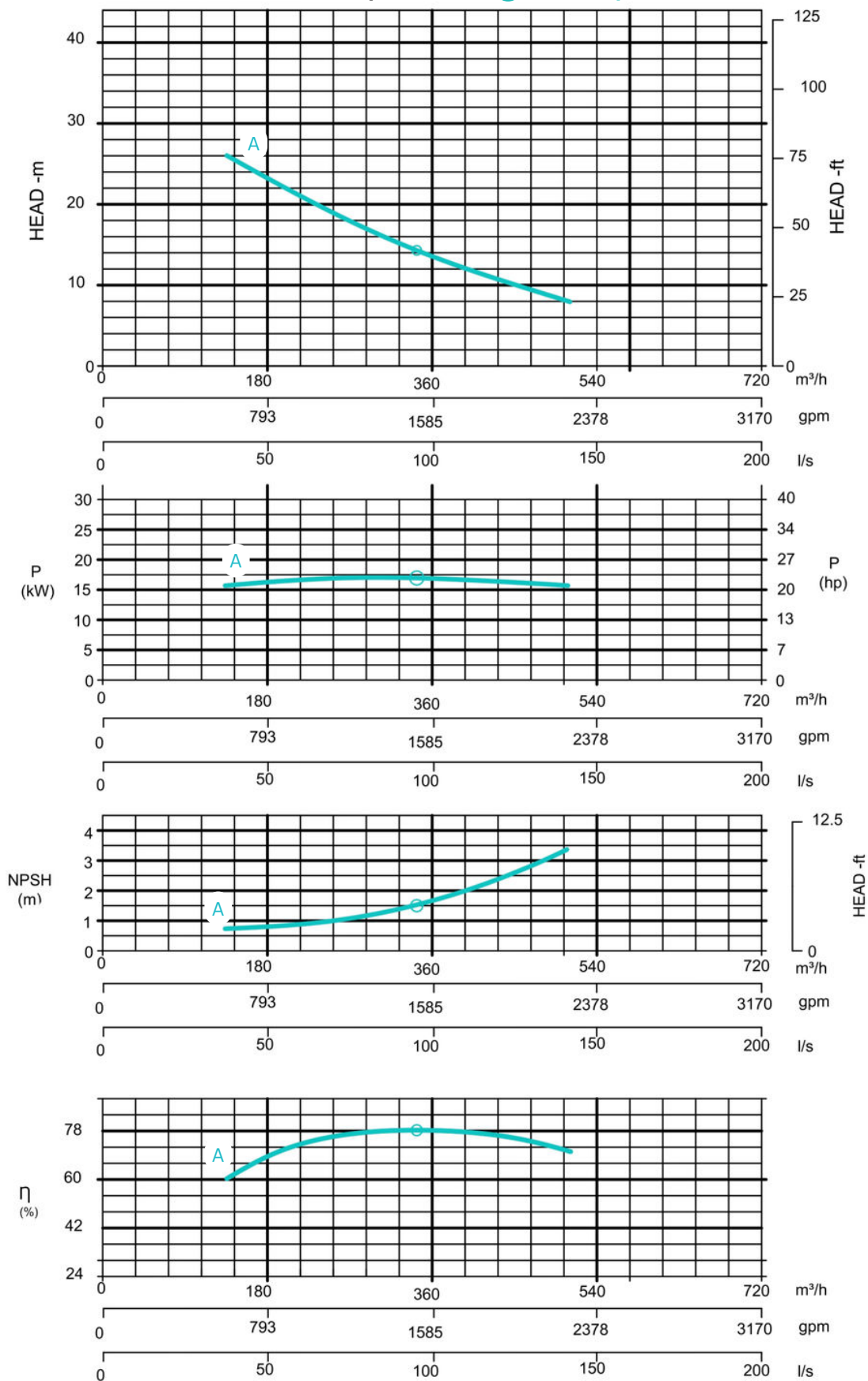
---



**Open Canopy** Canopy type: **Stackable**  
Material: **Hot dip galvanized steel**  
Dimensions LxWxH: **2299x1100x1601 mm**  
(**90.51x43.31x63.03"**)  
Lifting point: **Single lifting point**  
Forklift pockets: **Installed**



### Curves at Speeds: **A 1470 rpm**



Note: Pump power P include mechanical seal friction and bearing frame losses, from a run in bearing frame.  
(Testing according ISO 9906:2012-38)