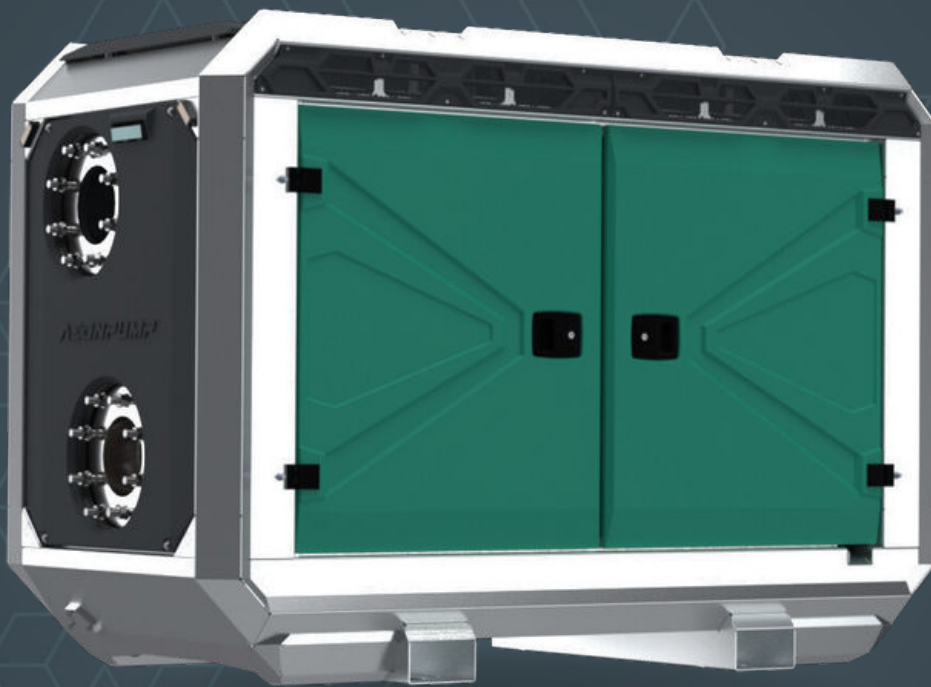


AEDONPUMP

RAPTOR 8D



DIESEL

**DRIVEN SEWAGE
AND DEWATERING PUMP**

FEATURES AND COMPETITIVE EDGE

Type: **Raptor 8D**
Connection size: **8"**

Frame LxWxH: **2299x1100x1601 mm**
(90.51x43.31x63.03")

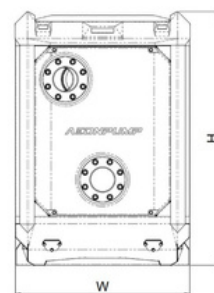
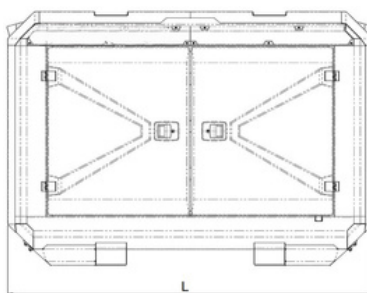
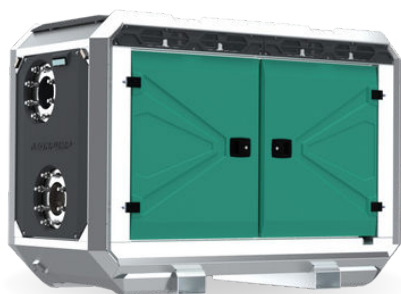
Dry weight: **1950 kg (4299.01 lbs)**

Fuel tank capacity: **270 L (71.33 US gallons)**

Sound level: **73 dB (at 10 m/ at 32.8 feet)**

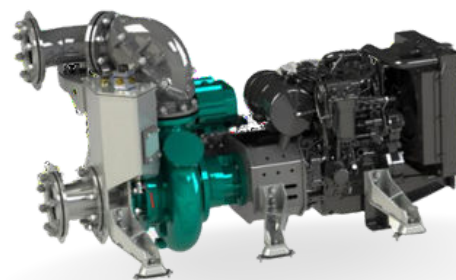
Designed for heavy duty applications.
Sewage bypass, drainage and dewatering:

- Extended maintenance intervals;
- High-grade parts of superior quality;
- Online telemetry and remote access capability;
- Unsurpassed efficiency values that set the industry standard.



PUMP TECHNICAL SPECIFICATION

Pump Max. flow: **600 m³/h (2640 gpm)**
Max. pressure: **44 m (144.36 feet)**
Impeller type: **Screw impeller**
Solids handling: **115 mm (4.53")**
Temperature: **max. 40°C (max 104°F)**
Casing: **GG25 (0.6025)**
Impeller: **GGG60 (0.7060)**
Suction Liner: **GG20 (0.6020)**
Wear Ring: **GG20 (0.6020)**
Shaft: **1.4021**
Shaft sealing: **WC/SiC/NBR**
O-Rings: **NBR**
Suction liner adjustable by external regulation screws





Priming System Pump type: **dry claw vacuum pump**
Air handling capacity: **60 m³/h (35 CFM)**
Max. vacuum: **9.0 m (29.5 feet)**
Floatbox: **Hot dip galvanized Steel**
Non-return valve: **Ductile iron GJS400**
Check valve ball: **Rubber NBR**



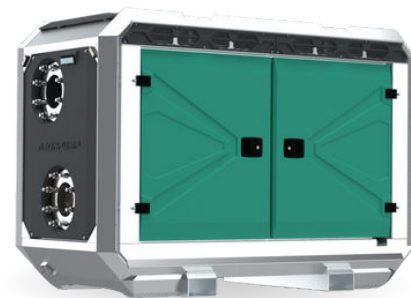
ENGINE OPTIONS

Standard Model: **Hatz 3H50TICD/ Hatz 3H50TIC/ Hatz 3H50TI**
Emission standard: **Stage V/ Tier 4F/ Stage III**
Cylinders: **3**
Displacement litres: **1.464 (89.34 cu.in.)**
Aspiration **Turbocharged**
Bore and stroke mm: **84 x 88 Inches (3.31x3.46")**
Maximum power: **28 kW (37.55 hp) @1700 rpm**
Variable speed: **1500 - 1700 rpm**
Combustion system: **High-pressure common rail direct injection**
Exhaust after treatment: **cEGR, DOC, DPF**

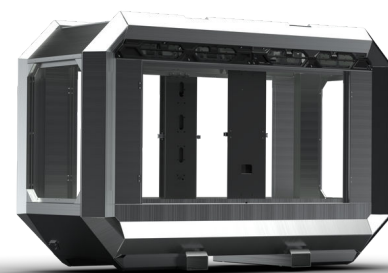


FRAME OPTIONS

Silent canopy Canopy type: **Stackable**
Material: **Hot dip galvanized Steel**
Dimensions LxWxH: **2299x1100x1601 mm**
(**90.51x43.31x63.03"**)
Lifting point: **Single lifting point**
Forklift pockets: **Installed**



Open canopy Canopy type: **Stackable**
Material: **Hot dip galvanized Steel**
Dimensions LxWxH: **2299x1100x1601 mm**
(**90.51x43.31x63.03"**)
Lifting point: **Single lifting point**
Forklift pockets: **Installed**



CONTROL PANEL OPTIONS

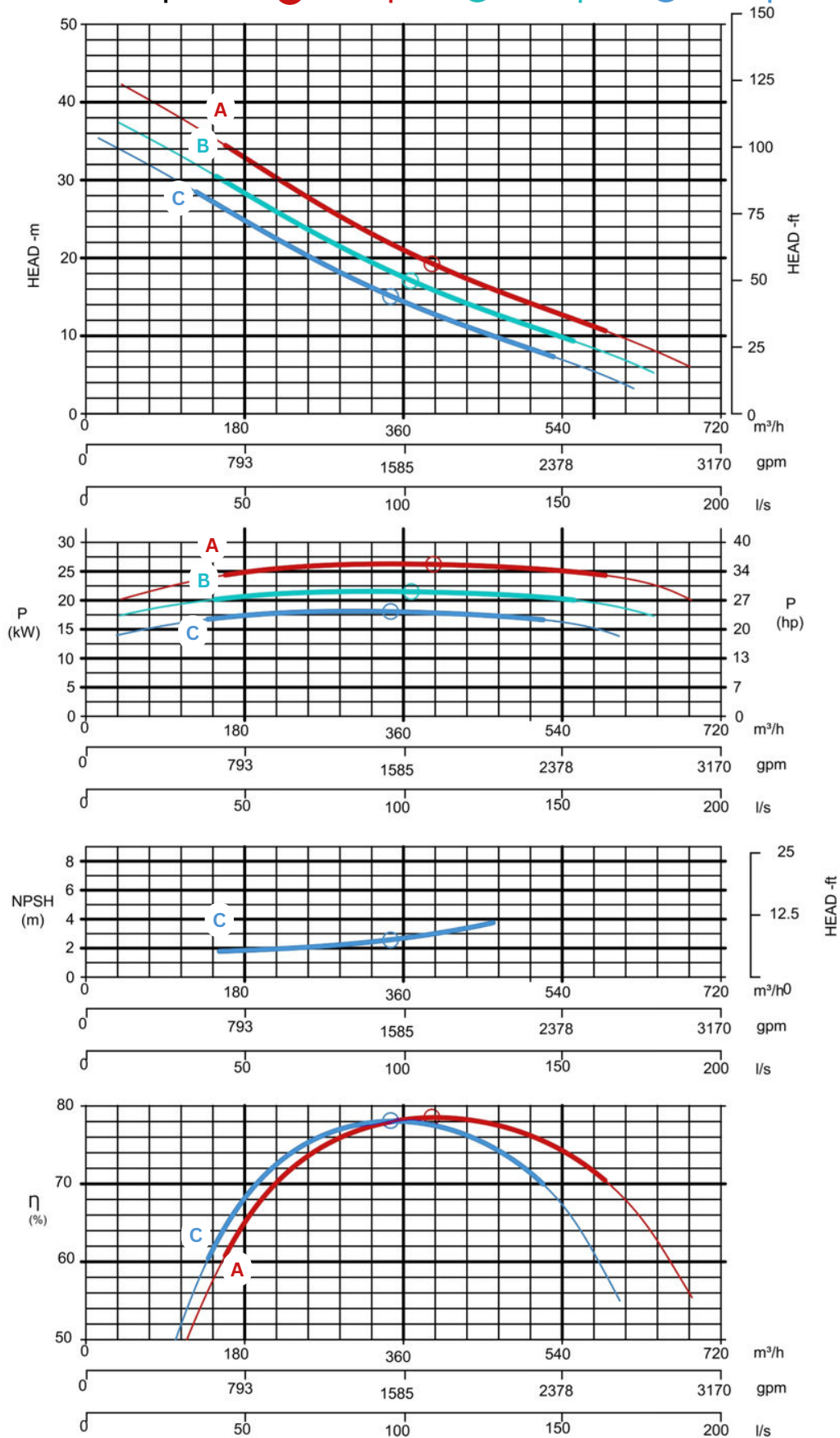
Standard AEONPUMP Software
Automatic level control
Hydrostatic level sensor*
SMS alarm system*
Online telemetry*
Dual float switch
Light Assistant*

* Optional





Curves at Speeds: **A 1700 rpm** **B 1600 rpm** **C 1500 rpm**



Note: Pump power P include mechanical seal friction and bearing frame losses, from a run in bearing frame.
(Testing according ISO 9906:2012-38)