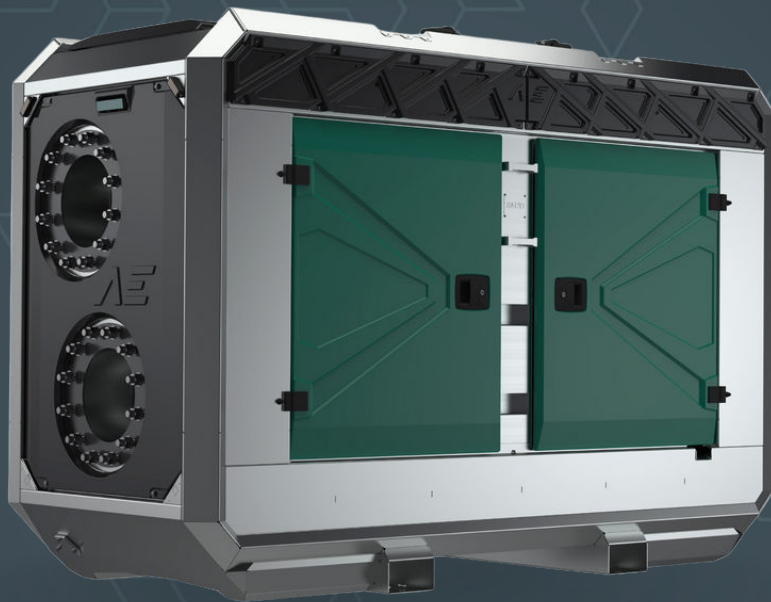


**AEDONPUMP**

# RAPTOR 12D HEAVY



**DIESEL**

**DRIVEN SEWAGE  
AND DEWATERING PUMP**

## FEATURES AND COMPETITIVE EDGE

Type: **RAPTOR 12D HEAVY**

Connection size: **12"**

Frame LxWxH: **2700x1150x1820 mm  
(106.3x45.3x71.7")**

Dry weight: **3300 kg (7275.25 lbs)**

Fuel tank capacity: **400 L**

**(105.7 US gallons)**

Sound level: **75 dB (at 10 m/at 32.8 feet)**

**Designed for heavy duty applications.**

**Sewage bypass, drainage and dewatering:**

- Extended maintenance intervals;
- High-grade parts of superior quality;
- Online telemetry and remote access capability;
- Unsurpassed efficiency values that set the industry standard.



## PUMP TECHNICAL SPECIFICATION

### Pump

Max. flow: **1260 m<sup>3</sup>/h (5544 gpm)**

Max. pressure: **45 m (147.64 feet)**

Impeller type: **Screw impeller**

Solids handling: **120 mm (4.72")**

Temperature: **max. 40°C (max 104°F)**

Casing: **GG25 (0.6025)**

Impeller: **GGG60 (0.7060)**

Suction Liner: **GG20 (0.6020)**

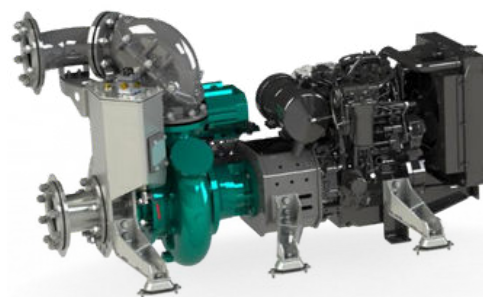
Wear Ring: **GG20 (0.6020)**

Shaft: **1.4021**

Shaft Sealing: **WC/SiC/NBR**

O-Rings: **NBR**

Suction liner adjustable by external regulation screws



**Priming  
System**

Pump type: **dry claw vacuum pump**  
Air handling capacity: **60 m<sup>3</sup>/h (35 CFM)**  
Max. vacuum: **9.0 m (29.5 feet)**  
Floatbox: **Hot dip galvanized Steel**  
Non-return valve: **Ductile iron GJS400**  
Check valve ball: **Rubber NBR**

**ENGINE****Standard**

Model: **Perkins 904J-E36TA**  
Emission standard: **Stage V**  
Cylinders: **4**  
Displacement: **3.6 L (219.69 cu.in.)**  
Aspiration **Turbocharged after-cooled**  
Bore and stroke mm: **98 x 120 mm (3.86x4.72")**  
Maximum power: **65 kW (87.17 hp) @1700 rpm**  
Variable speed: **1500 - 1700 rpm**  
Combustion system: **Direct Injection**  
Exhaust after treatment: **DOC, DPF**

**FRAME OPTIONS****Silent  
canopy**

Canopy type: **Stackable**  
Material: **Hot dip galvanized steel**  
Dimensions LxWxH: **2700x1150x1820 mm  
(106.3x45.3x71.7")**  
Lifting point: **Single lifting point**  
Forklift pockets: **Installed**





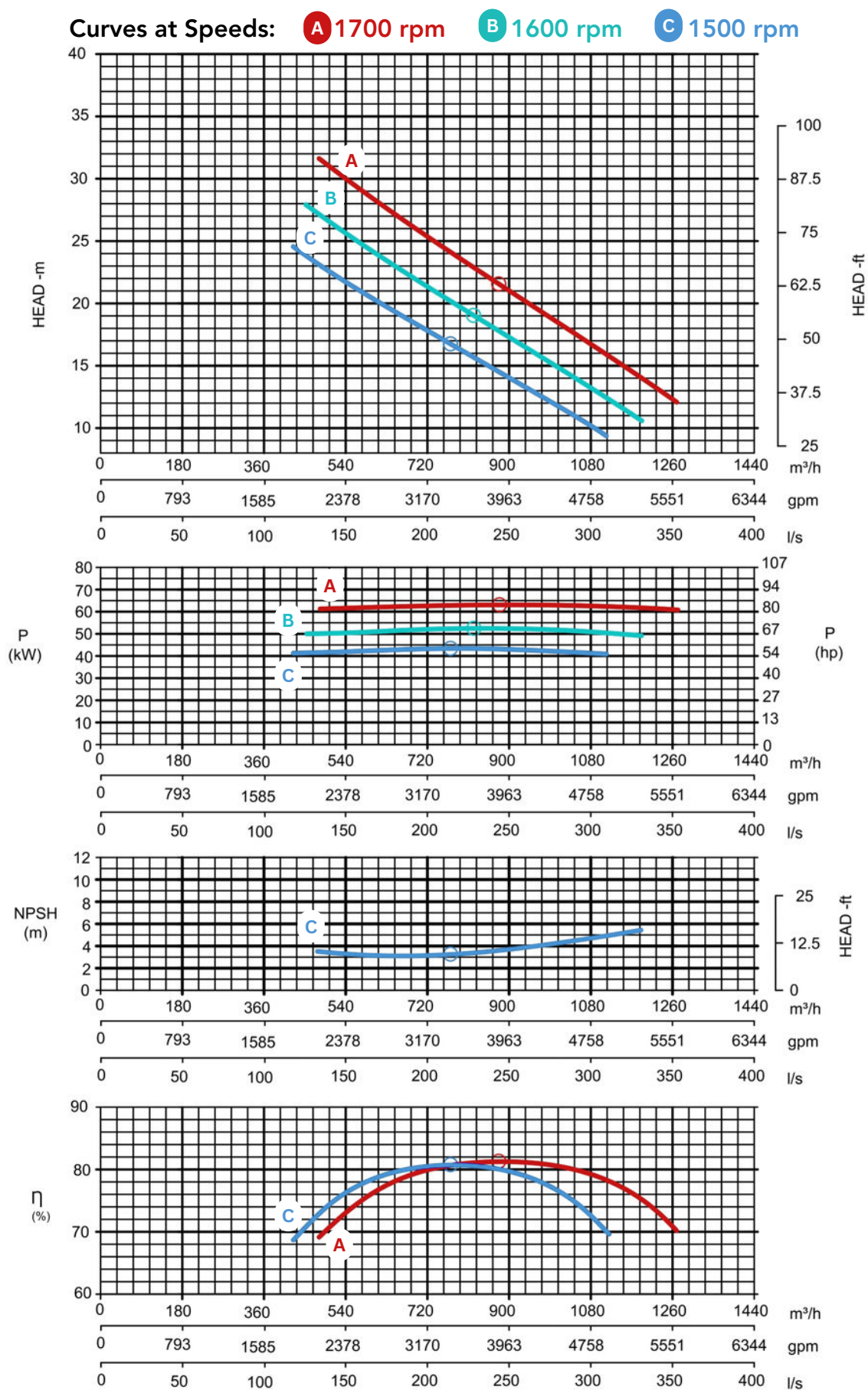
**Open canopy** Canopy type: **Stackable**  
Material: **Hot dip galvanized steel**  
Dimensions LxWxH: **2700x1150x1820 mm**  
**(106.3x45.3x71.7")**  
Lifting point: **Single lifting point**  
Forklift pockets: **Installed**

## CONTROL PANEL OPTIONS

**Standard** AEONPUMP Software  
Automatic level control  
Hydrostatic level sensor\*  
SMS alarm system\*  
Online telemetry\*  
Dual float switch  
Light Assistant\*

\* Optional





Note: Pump power P include mechanical seal friction and bearing frame losses, from a run in bearing frame.  
(Testing according ISO 9906:2012-38)