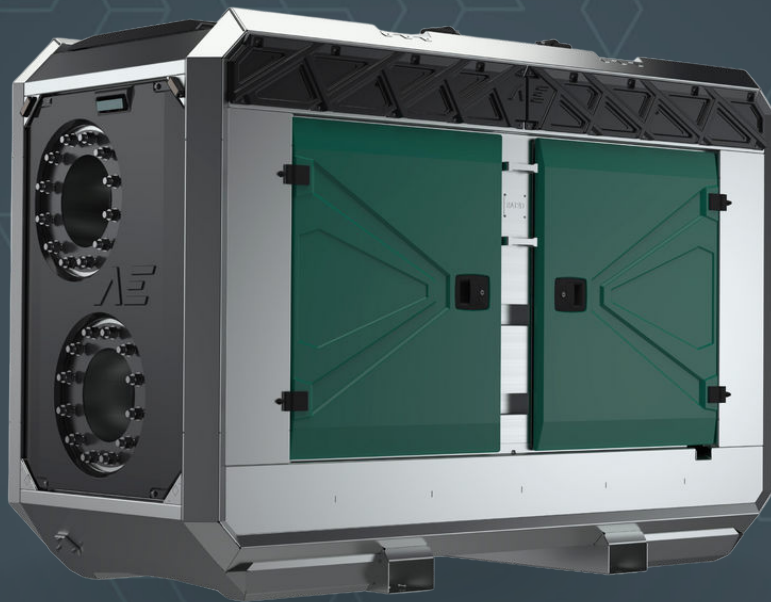


AEDONPUMP

RAPTOR 12D



DIESEL

**DRIVEN SEWAGE
AND DEWATERING PUMP**

FEATURES AND COMPETITIVE EDGE

Type: **RAPTOR 12D**
Connection size: **12"**

Frame LxWxH: **2700x1150x1820 mm**
(106.3x45.3x71.7")
Dry weight: **3200 kg (7054.79 lbs)**
Fuel tank capacity: **400 L**
(105.7 US gallons)
Sound level: **72 dB (at 10 m/at 32.8 feet)**

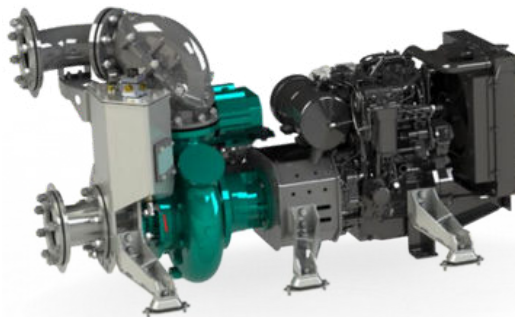
Designed for heavy duty applications.
Sewage bypass, drainage and dewatering:

- Extended maintenance intervals;
- High-grade parts of superior quality;
- Online telemetry and remote access capability;
- Unsurpassed efficiency values that set the industry standard.



PUMP TECHNICAL SPECIFICATION

Pump Max. flow: **1044 m³/h (4593.6 gpm)**
Max. pressure: **35 m (114.83 feet)**
Impeller type: **Screw impeller**
Solids handling: **120 mm (4.72")**
Temperature: **max. 40°C (max 104°F)**
Casing: **GG25 (0.6025)**
Impeller: **GGG60 (0.7060)**
suction Liner: **GG20 (0.6020)**
Wear ring: **GG20 (0.6020)**
Shaft: **1.4021**
Shaft sealing: **WC/SiC/NBR**
O-Rings: **NBR**
Suction liner adjustable by external regulation screws



**Priming
System**

Pump type: **dry claw vacuum pump**
Air handling capacity: **60 m³/h (35 CFM)**
Max. vacuum: **9.0 m (29.5 feet)**
Floatbox: **Hot dip galvanized Steel**
Non-return valve: **Ductile iron GJS400**
Check valve ball: **Rubber NBR**

**ENGINE OPTIONS****Standard**

Model: **Hatz 4H50TICD/ Hatz 4H50TIC/ 4H50TI**
Emission standard: **Stage V/ Tier 4f/ Stage III**
Cylinders: **4**
Displacement: **1.952 L (119.12 cu.in.)**
Aspiration **Turbocharged charge air cooling**
Bore and stroke mm: **84 x 88 Inches (3.31x3.46")**
Maximum power: **45 kW (60.35 hp) @1700 rpm**
Variable speed: **1500 - 1800 rpm**
Combustion system: **Direct injection**
Exhaust after treatment: **DOC, DPF**



FRAME OPTIONS

Silent canopy

Canopy type: **Stackable**
Material: **Hot dip galvanized Steel**
Dimensions LxWxH: **2700x1150x1820 mm**
(106.3x45.3x71.7")
Lifting point: **Single lifting point**
Forklift pockets: **Installed**



Open canopy

Canopy type: **Stackable**
Material: **Hot dip galvanized Steel**
Dimensions LxWxH: **2700x1150x1820 mm**
(106.3x45.3x71.7")
Lifting point: **Single lifting point**
Forklift pockets: **Installed**



CONTROL PANEL OPTIONS

Standard

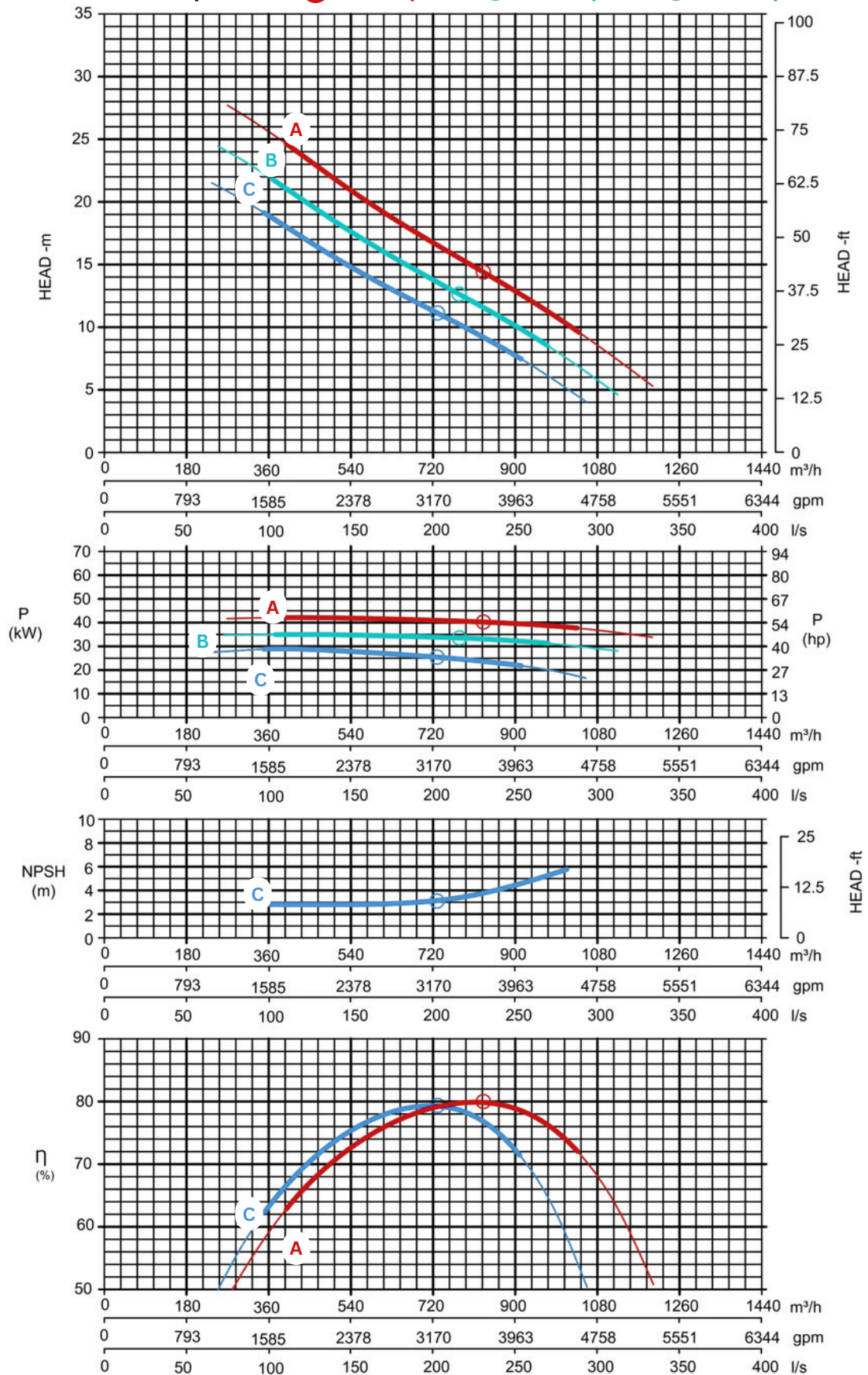
AEONPUMP Software
Automatic level control
Hydrostatic level sensor*
SMS alarm system*
Online telemetry*
Dual float switch
Light Assistant*

* Optional





Curves at Speeds: **A** 1700 rpm **B** 1600 rpm **C** 1500 rpm



Note: Pump power P include mechanical seal friction and bearing frame losses, from a run in bearing frame.
(Testing according ISO 9906:2012-38)