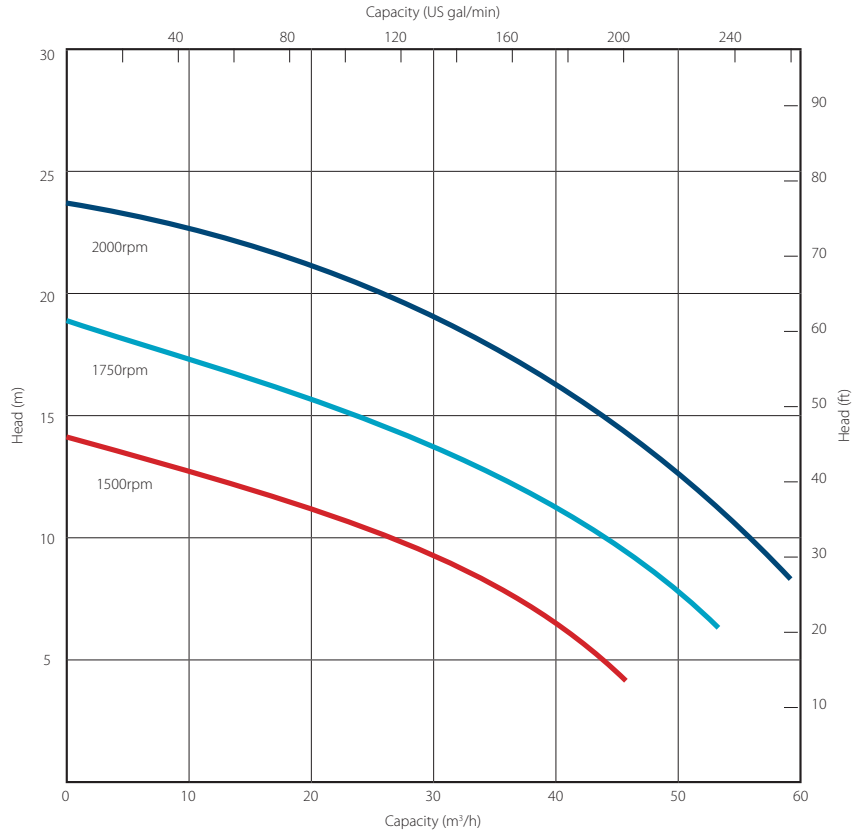


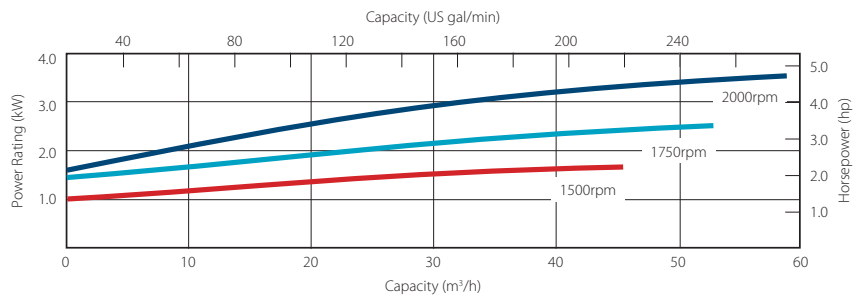
High volume drainer 'D' pump

Pump end specification		
	Metric	US
Capacity	59 m ³ /h	260 gpm
Total Head	23.5 m	77 ft
Max. Solids Size	29 mm	1.14 in
Self Priming Lift	8.8 m	29 ft
Air Handling	4.25 l/s	8.8 cfm
Selprime® Absorbs	0.9 kW	1.2 hp
Power Required	3.7 kW	5 hp
Pump Speed Max.	2000	2000
Pump Speed Min.	1000	1000
Impeller Type	Drainer	Drainer
Impeller Blades	2	2
Impeller Diameter	180 mm	7 in
Inlet Port	DN 75 PN6	3 PN6
Outlet Port	DN 75 PN6	3 PN6
Length	57 cm	22.4 in
Width	41cm	16.1 in
Height	48 cm	18.9 in
Weight	80 Kg	176 lb



Priming method - Selprime®

The unique original Selwood self priming system utilising a water tolerant diaphragm air pump. An environmentally friendly design that has none of the problems of oil vapour emissions and oil emulsification associated with other priming systems.



Pump end materials	
Pump Casing	Grey Iron BSEN 1561 Grade EN-GJL-250
Impeller	Cast Iron BSEN 1563 Grade EN-GJS-450-10
Wear Plates	Cast Iron BSEN 1563 Grade EN-GJS-450-10
Shaft	Steel BS970 Grade 212M36/212M44
NRV Body	Cast Iron BSEN 1563 Grade EN-GJS-450-10
Mechanical Seal	Silicon Carbide
Pump End Bearing	Cylindrical Roller
Drive End Bearing	Ball

High volume drainer 'D' pump builds

Our 'D Pumps' offer high efficiency centrifugal pumps for high-volume fluid transfer.

Handling flows of up to 59 m³/h, these highly efficient Selprime pumps offer emission compliant engines, are easy to operate and maintain and have a robust construction.

Perfect for use with

- S** water – clean, with fine or larger solids
- S** screened sewage



Standard builds	2 Wheel Trolley		2 Wheel Site*		Electric Static	
	Metric	US	Metric	US	Metric	US
Length	143 cm	56 in	156 cm	61 in	104 cm	41 in
Width	77 cm	30 in	77 cm	30 in	66 cm	26 in
Height	109 cm	43 in	112 cm	44 in	58 cm	23 in
Dry Weight	225 kg	496 lb	260 kg	573 lb	155 kg	342 lb
Gross Weight	230 kg	507 lb	277 kg	611 lb	155kg	342 lb
Sound Power	112 LWA		112 LWA		84 LWA	
Sound Pressure @ 1m (3ft)	90 db(A)		90 db(A)		73 db(A)	
Sound Pressure @ 7m (23ft)	81 db(A)		81 db(A)		56 db(A)	
Pump SAE Size	SAE 6		SAE 6		SAE 6	
Motor	Hatz 1D42Z		Hatz 1D42Z		3 kW 400/3/50	
Emission Rating	< 37kW		< 37kW		-	
Engine / Motor Max Speed	2000 rpm		2000 rpm		2000 rpm	
Fuel Tank Capacity.**	5 lt	1.3 US gal	20 lt	5.3 US gal	-	-
BEP - Fuel Consumption	0.9 lt/hr	0.24 US gal/hr	0.9 lt/hr	0.24 US gal/hr	-	-

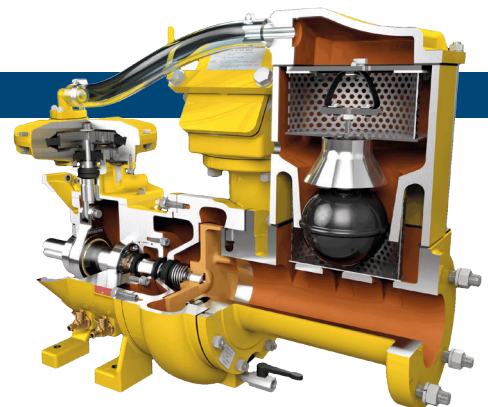
*Open sets exclude fittings

** Fuel tank capacity can be increased with the addition of an auxiliary fuel tank.

Installation drawings are available upon request.

Optional extras

- | | |
|--------------------------------|----------------------------------|
| Training | Pump telemetry |
| Genuine parts | Oil drain kit |
| Valves / Fittings | Hose / pipework |
| Pump accessories | DOL panels |
| Tanks & filtration | Soft Start panels |
| Pipe stoppers | Variable speed drive panels |
| Auto stop/start control panels | Ultra-sonic level control panels |



SELWOOD
www.selwood.co.uk

Bournemouth Road
Chandler's Ford, Eastleigh
Hampshire
SO53 3ZL UK

T +44(0) 23 8026 6311
E info@selwood.co.uk